

TB294 (Rev1) – Configuring Notepad++

1. Download the latest Notepad++ release here: <https://notepad-plus-plus.org/download/v6.7.8.2.html>

Note: These instructions may not apply to older versions of Notepad++

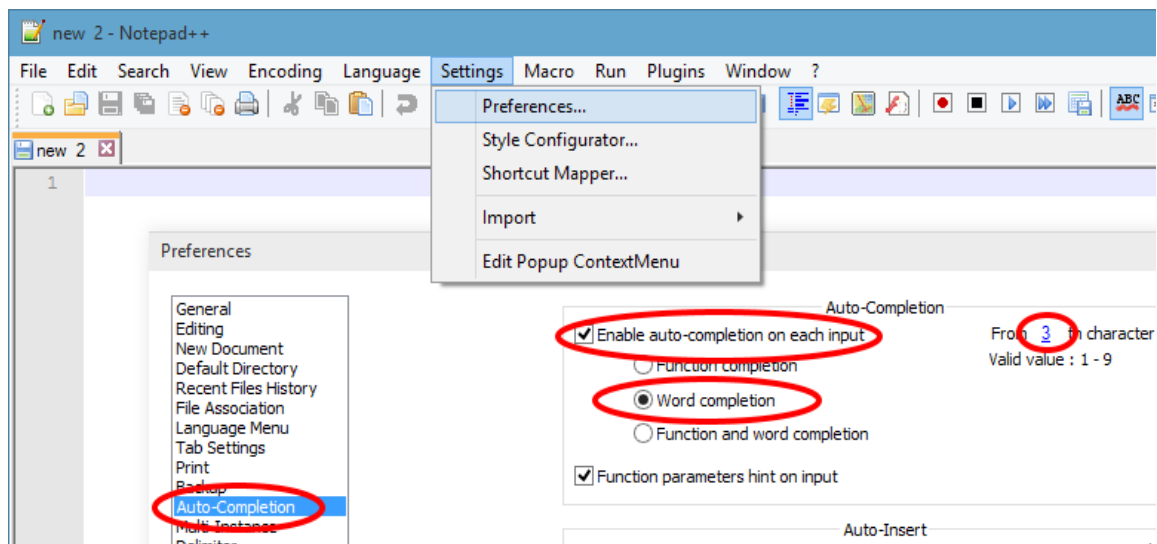
2. Install Notepad++ with the default settings. (Don't check any boxes or change anything)

3. Open Notepad++

NOTE: Configuration settings take effect simply by entering them, most often there is no "Save", "Apply" or "Ok".

4. As shown below, turn on auto complete:

Settings->Preferences->Auto-completion
Check enable auto completion on each input
Check Word completion
Enter 3 in the "From the th character"
Note: there is no "save" just close it.



5. Click on the link below to download a zip file containing the plc and cnc configuration files.

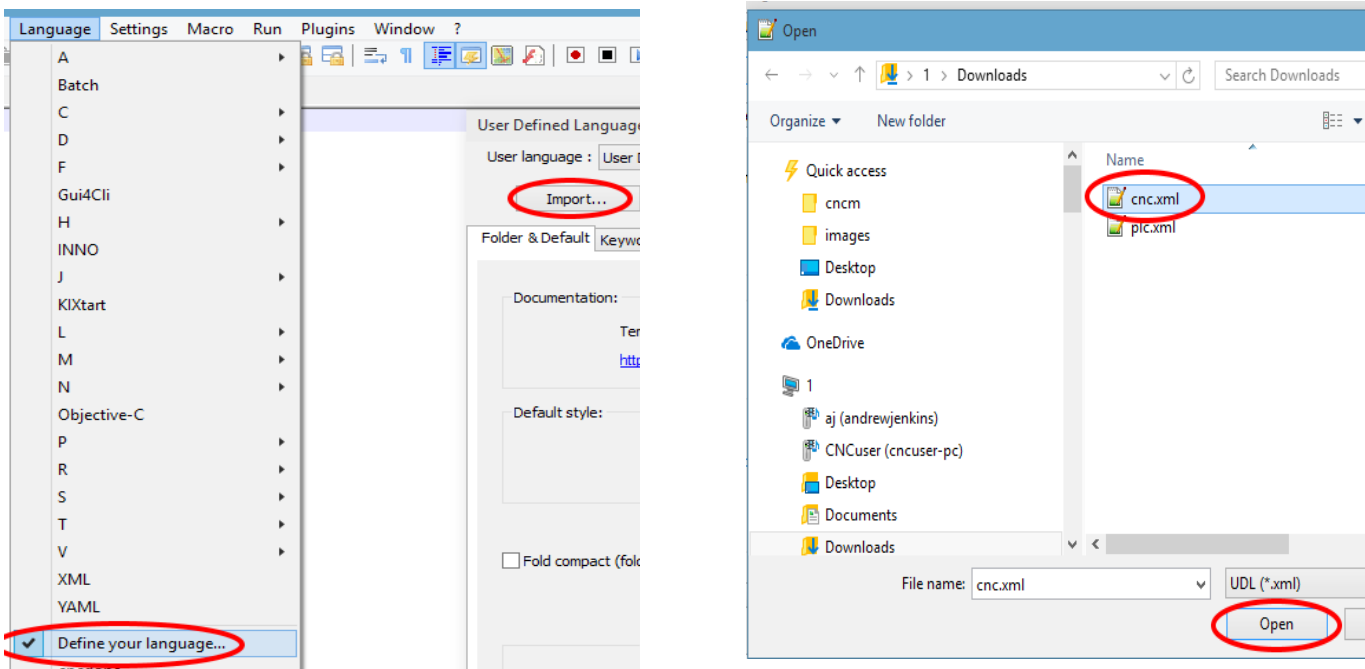
[notepad++files.zip](#) Or type the address below into your web browser:

<http://www.centroidcnc.com/usersupport/notepad++config/notepad++files.zip>

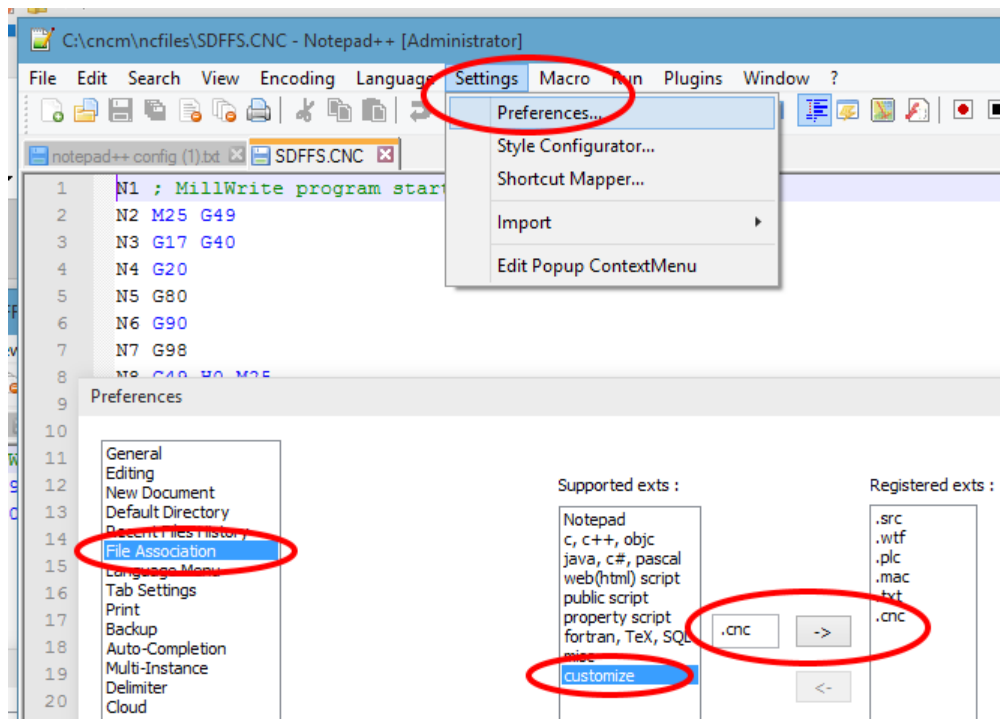
6. If using Notepad++ to compile PLC programs, extract the files from notepad++files.zip into the cncm or cncf directory created when you installed CNC11. If you will not be compiling PLC programs, unzip the files into the directory of your choice and proceed to step 7. If you are compiling PLC programs and are running Mill software, rename c:\cncm\compile-mill.txt to compile.cmd If you are running Lathe software, rename c:\cncf\compile-lathe.txt to compile.cmd

TB294 (Rev1) – Configuring Notepad++

7. Select Language->Define your Language->Import and navigate to the directory that you extracted the files in notepad++files.zip to. Now import cnc.xml and plc.xml (one at a time). (below)



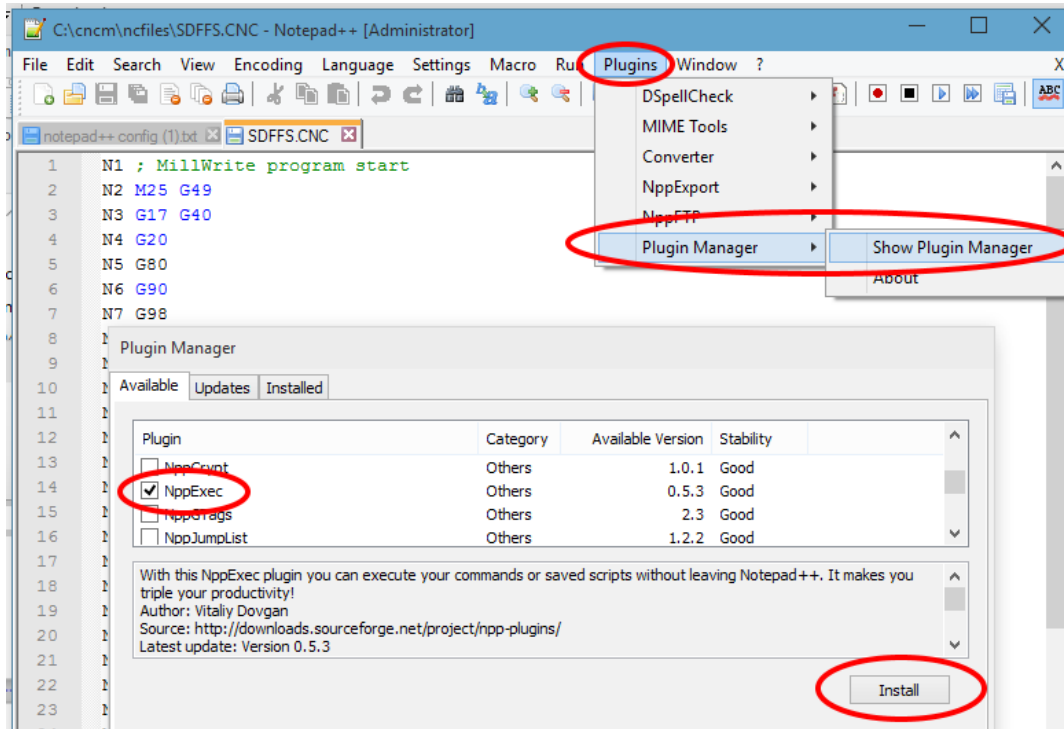
8. As shown below, select Settings->Preferences->File Associations-customize. One at a time, type the following extensions into the box (#1) - cnc, src, plc, mac and txt, and then press the arrow (#2) Note: There no need to add the period "." before the file extension, it is added automatically. Press "Close" when finished. If you will not be compiling PLC programs, Notepad++ configuration is complete



TB294 (Rev1) – Configuring Notepad++

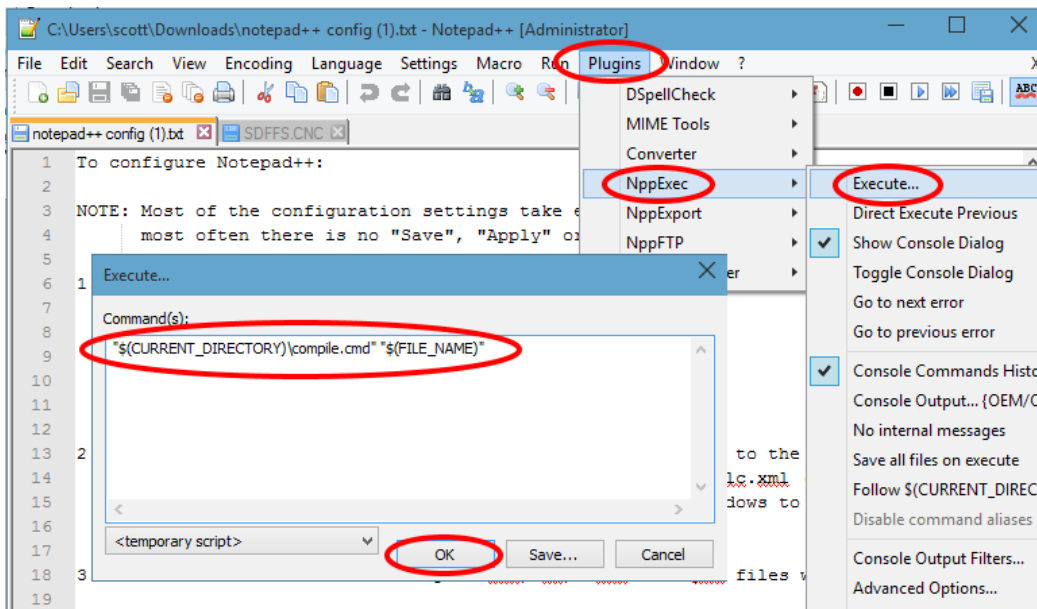
9. The following requires an active connection to the internet.

Add NppExec plugin by selecting Plugins->Plugin Manager->Show Plugin Manager. Check the box next “NppExec” and then click “Install as shown below.



10. Add the command to compile a PLC program to NppExec by selecting Plugins->NppExec->Execute as shown below and paste this line into the execute window as shown -be sure to include the opening and closing quotes:

"\$(CURRENT_DIRECTORY)compile.cmd" "\$(FILE_NAME)" -Click “OK” not “SAVE”

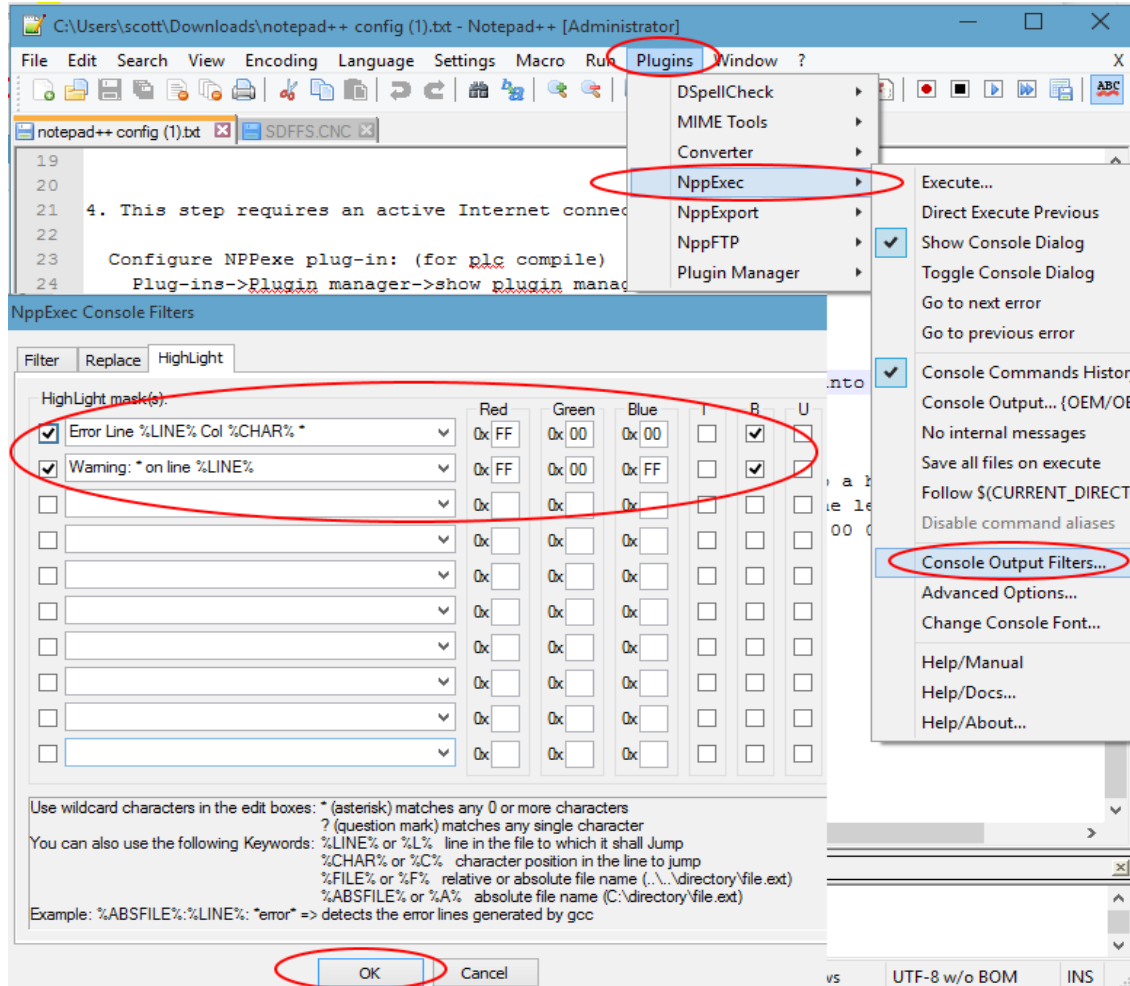


TB294 (Rev1) – Configuring Notepad++

11. Configure syntax highlighting for error messages by selecting Plugins->NppExec->Console Output Filters. Enter the following lines, one at a time, into the Highlight mask(s) as shown below.

Fist line: Error Line %LINE% Col %CHAR% * Be sure to check the box to the left, enter the color for highlighting errors as: FF 00 00 and check the B box (BOLD) and press “OK” to add the line as shown below.

Go back into “Console Output Filters” the same way you did to enter the first line and enter the second line: Warning: * on line %LINE% Be sure to check the box to the left, enter the color for highlighting warnings as: FF 00 FF and check the B box (BOLD) and press “OK” to complete.



Document History

Rev1 Created on 2015-05-28 by #277