

## TB 283 - Configuring Windows 8 to Run CNC11 Software

---

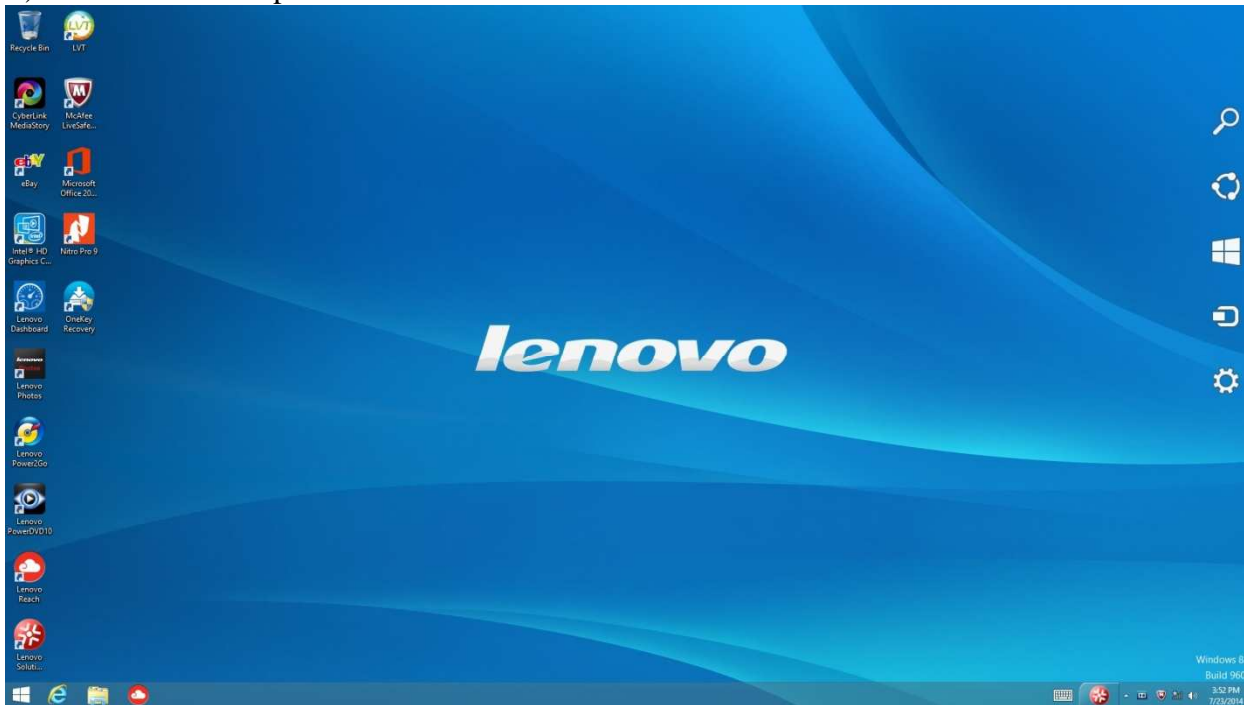
**Purpose:** This document will explain how to configure Windows 8 so that the CNC11 software will function correctly.

### Required Materials

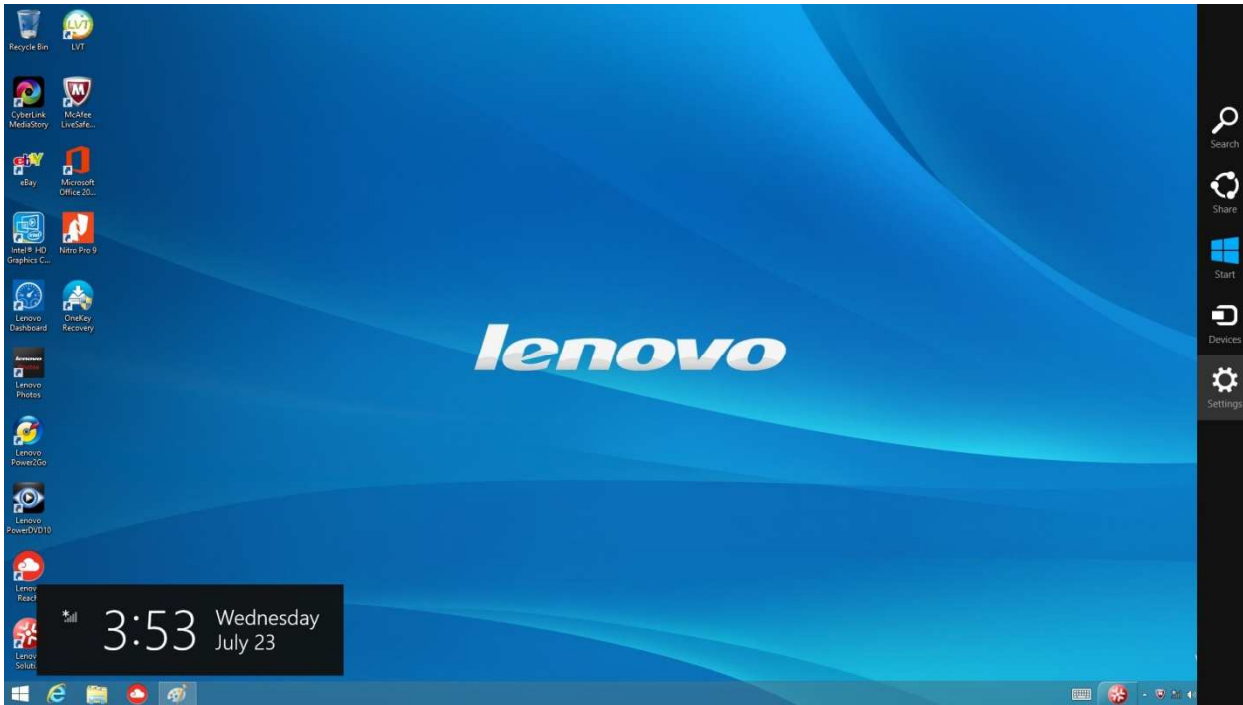
- Samsung 120GB SSD
- USB or SATA DVD player
- USB mouse
- copy of Windows 8 Home Premium 64-bit
- copy of the latest version of CNC11 software

### Instructions for Configuring Windows 8

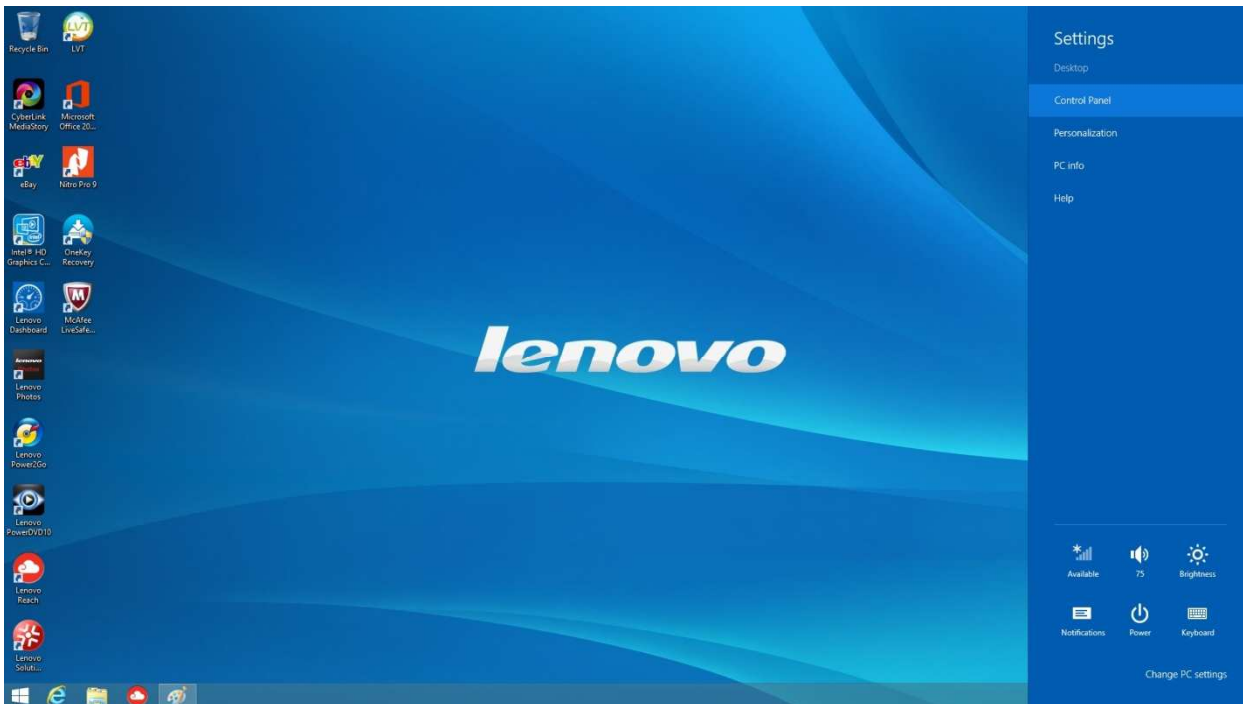
- 1.) Install SSD and DVD player into servo PC/console. Make sure to plug the SATA cable from the SSD into SATA0 on the motherboard. Software **MUST** be loaded on the system that you are working on. It **CANNOT** be loaded onto an SSD remotely and then installed onto the control. Windows does not allow that.
- 2.) Connect a **SHIELDED** CAT5/CAT6 Ethernet cable to the on-board Ethernet port and the MPU11.
- 3.) Power on the MPU11 and servo PC/console.
- 4.) Insert the Windows 8 DVD and install the Windows software.
- 5.) Start at the desktop view.



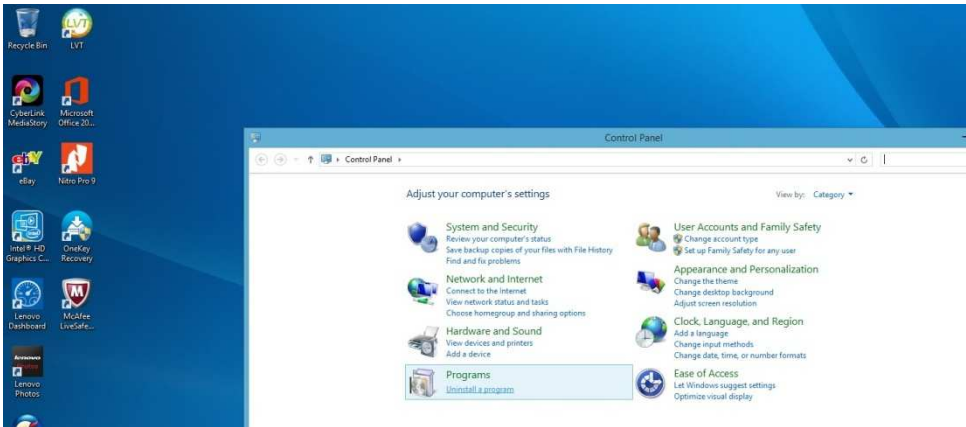
6.) Move your mouse to the right corner of the screen to bring out the side tab and click on the "Settings" button.



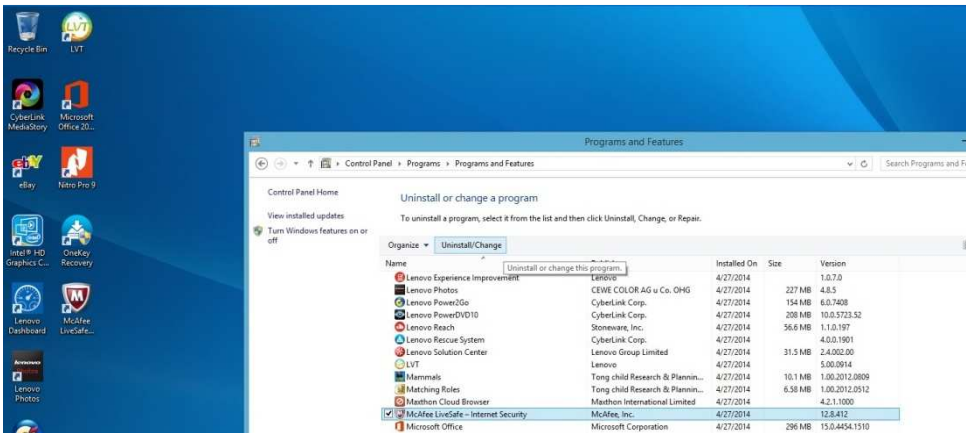
7.) Next click on the "Control Panel"



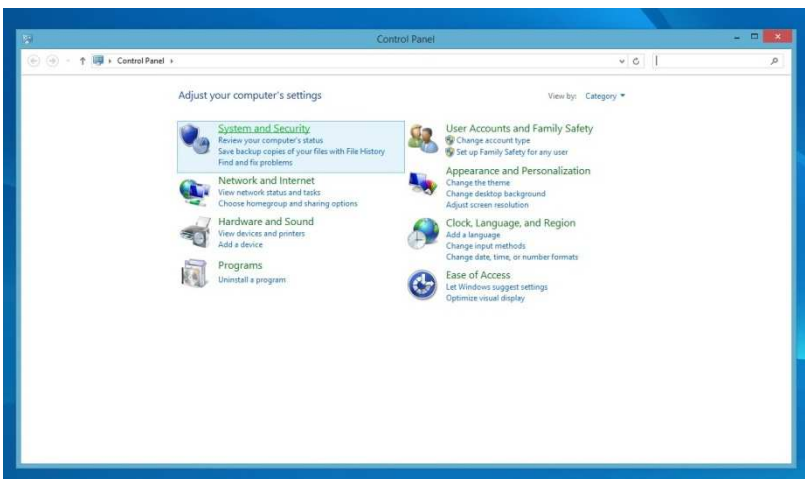
8.) Go to "Uninstall a Program" directly underneath "Programs."



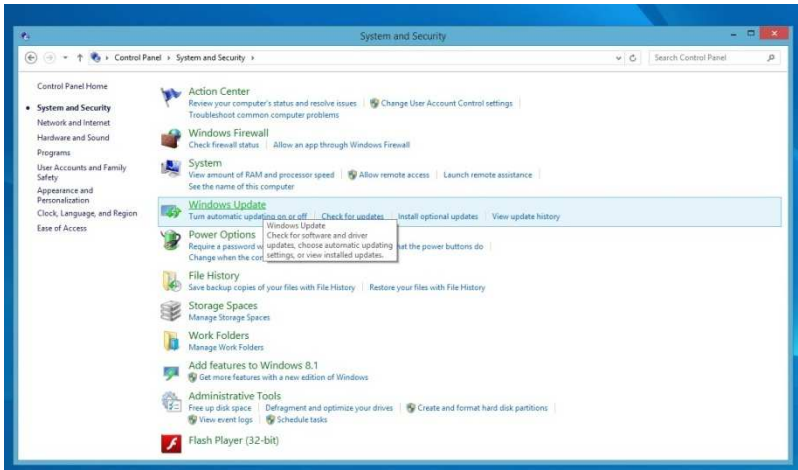
9.) Next uninstall any un-necessary programs that might have come from your computer manufacture. Some of these may include McCaffey Antivirus, various trial offers, etc.



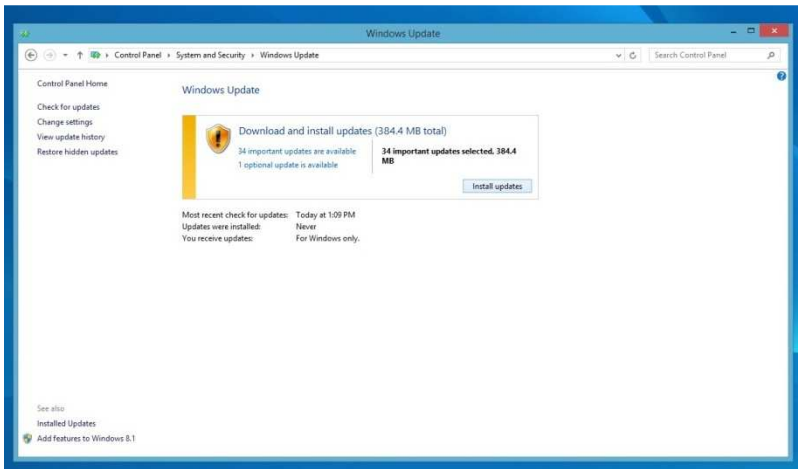
10.) Go back to the main "Control Panel" page and click on "System and Security".



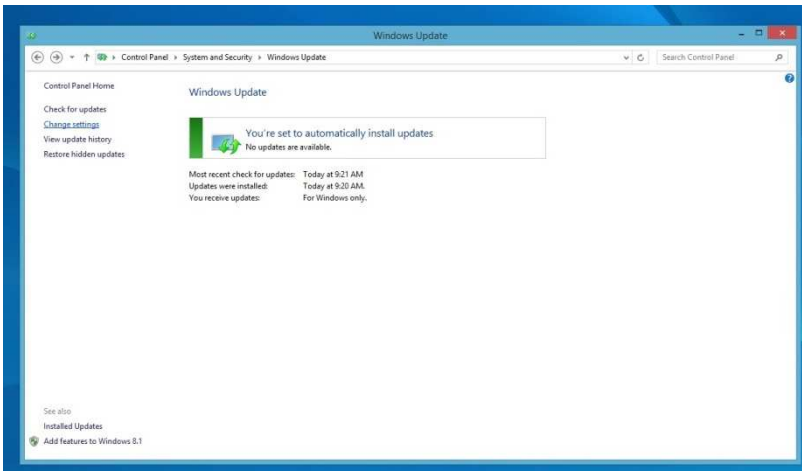
11.) Click on "Windows Update".



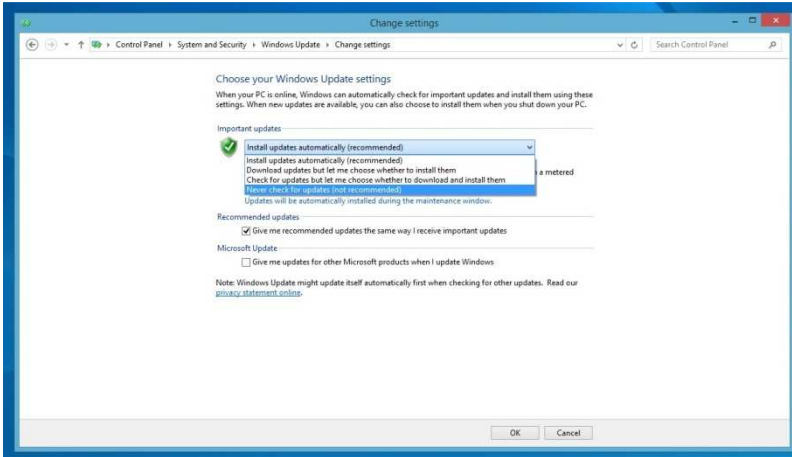
12.) Install the Updates. You may need to restart the computer several times.



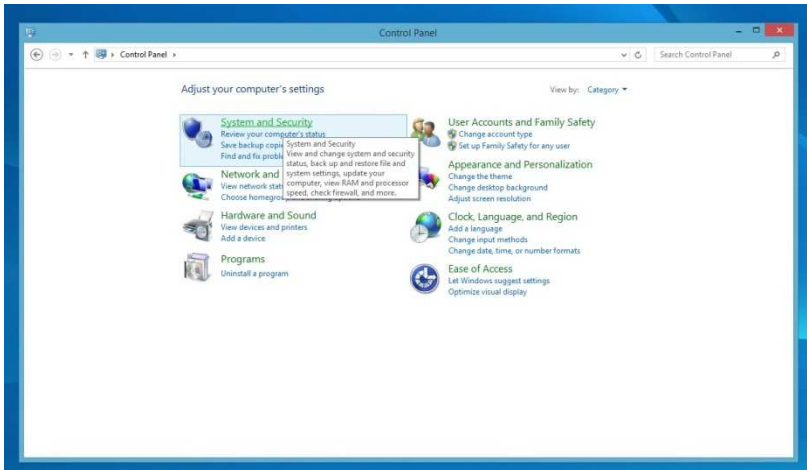
13.) Keep going until you see the below screen, stating that no more updates are available. Then click on the "Change settings" on the left side.



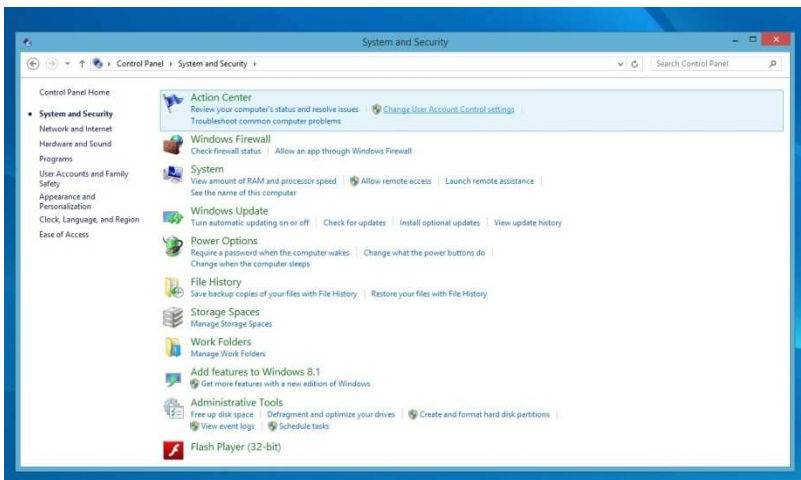
14.) From the dropdown under "Important updates" select "Never check for updates" and click OK at the bottom after.



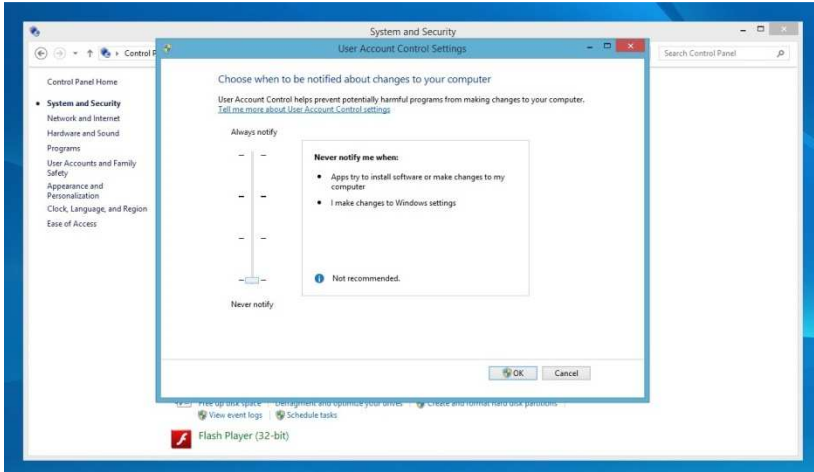
15.) Go back to the Control Panel view and click on "System and Security".



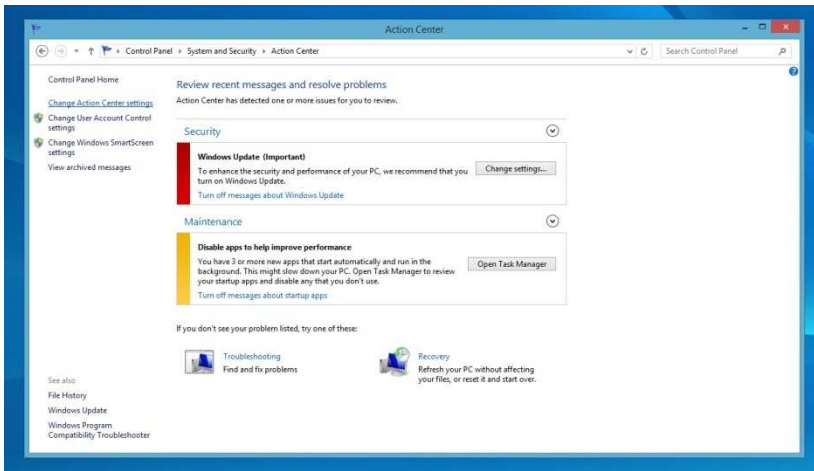
16.) Click on the "Action Center".



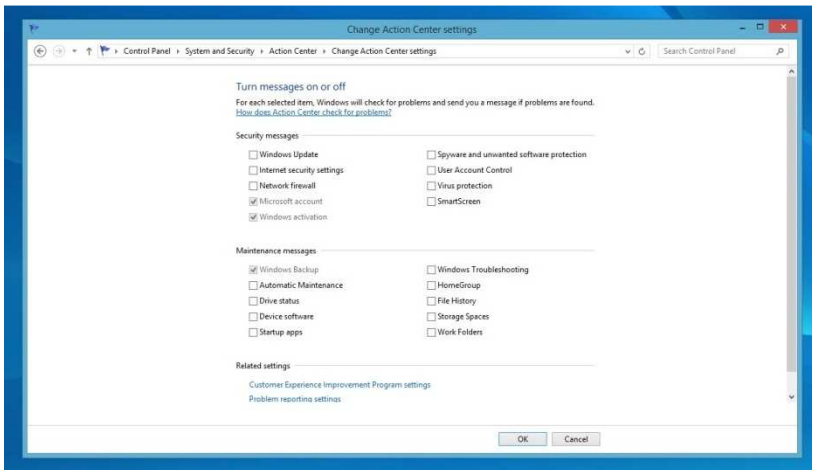
17.) Click on "Change User Account Control Settings" and then drag the bar to the "Never notify" at the bottom and click OK.



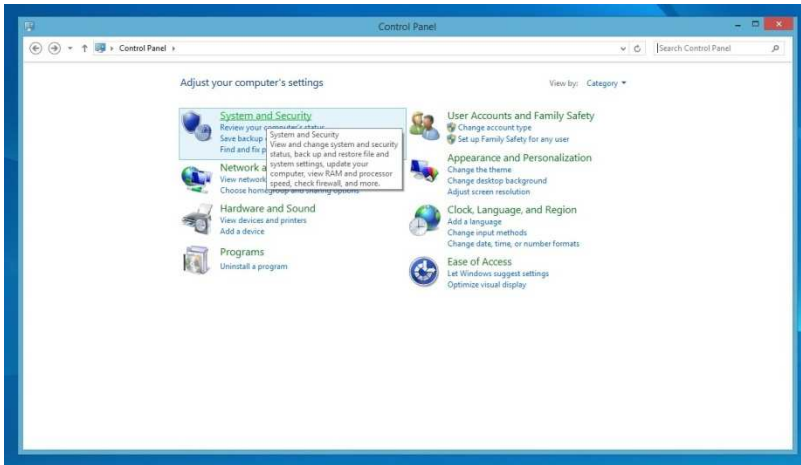
18.) Next click on "Change Action Center Settings".



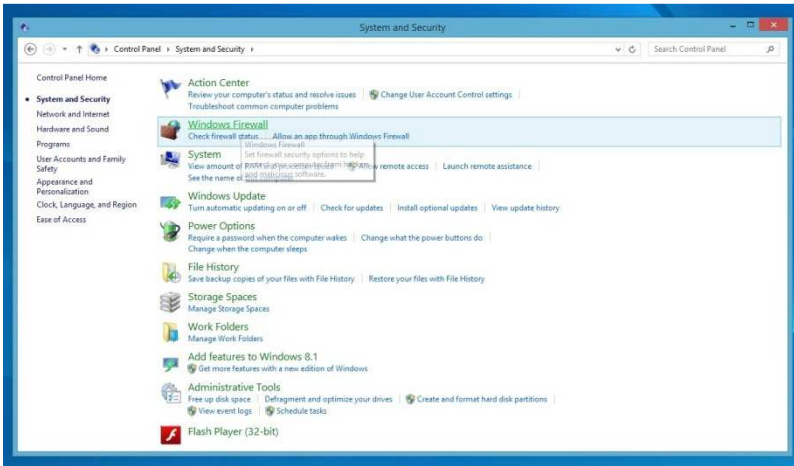
19.) Un-select every checkbox and click OK.



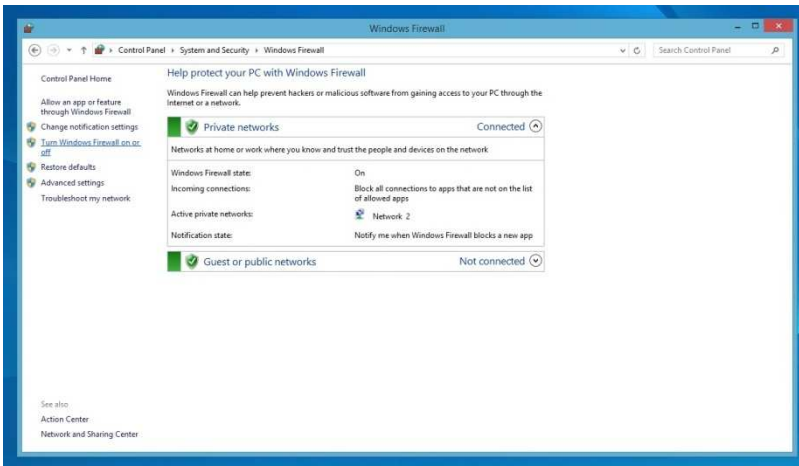
20.) Go back to the main Control Panel page and click on "System and Security".



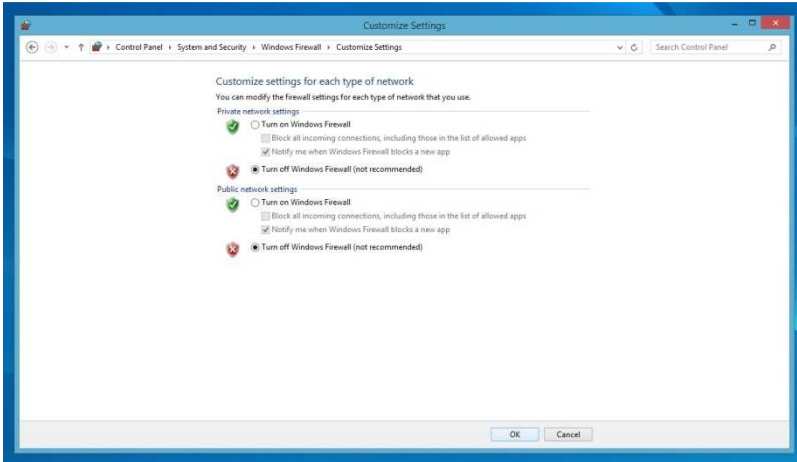
21.) Click on "Windows Firewall".



22.) Click on "Turn Windows Firewall on or off" on the left hand side.



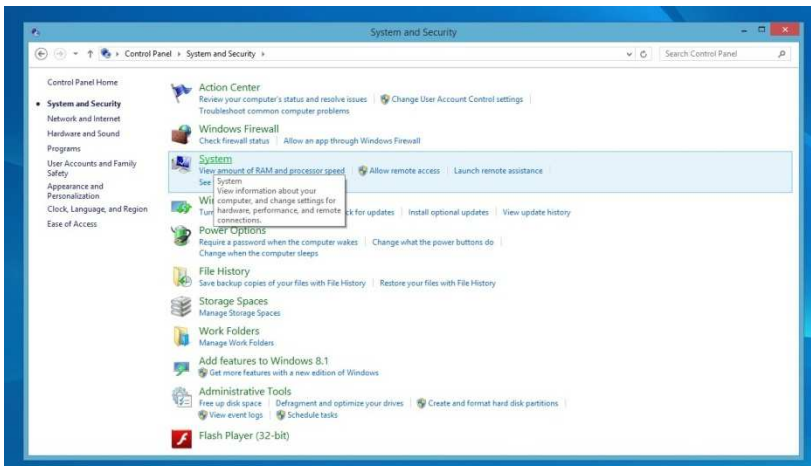
23.) Click on the "Turn off Windows Firewall" buttons on both the Private and Public network settings. Click OK at the bottom.



24.) Go back to the Control Panel Main page and click on "System and Security".



25.) Click on the "System" option.

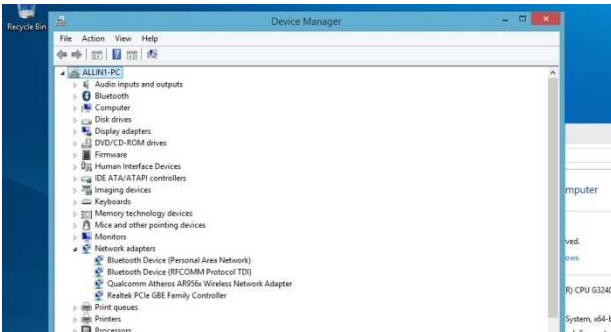




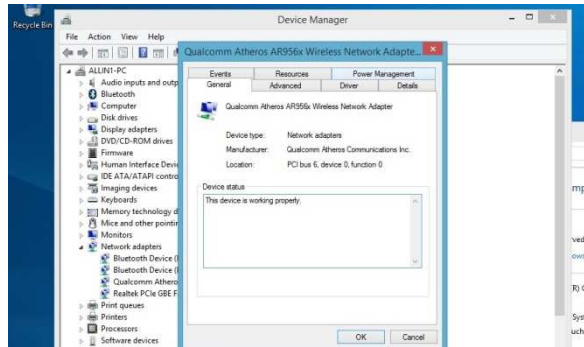
26.) Click on "Device Manager" on the left hand side.



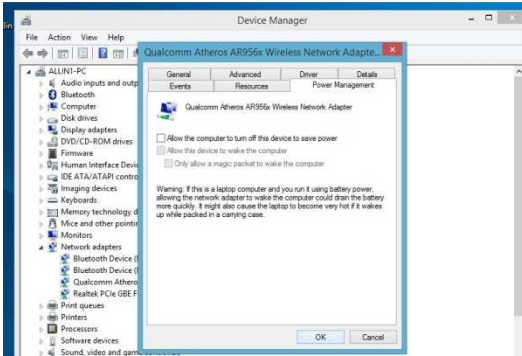
27.) Find the "Network adapters" and click to expand them.



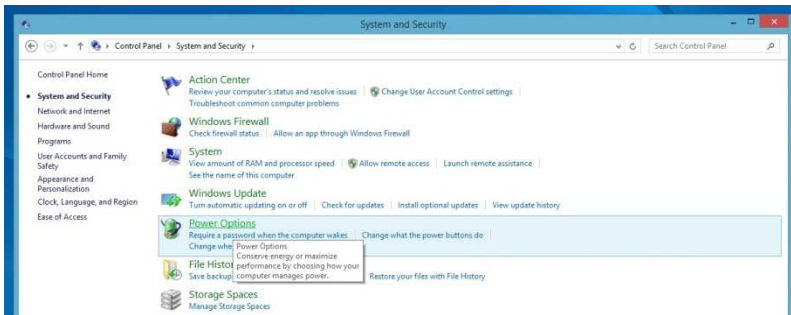
28.) Double-click on any Ethernet cards and the below should be displayed.



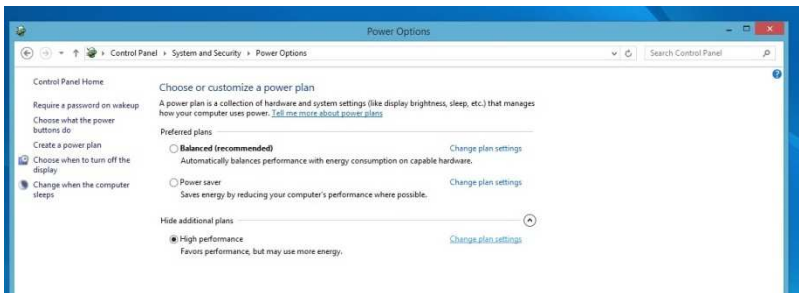
29.) Click on the "Power Management" tab and the uncheck all the boxes. Click OK and do the same for any other Ethernet Cards available.



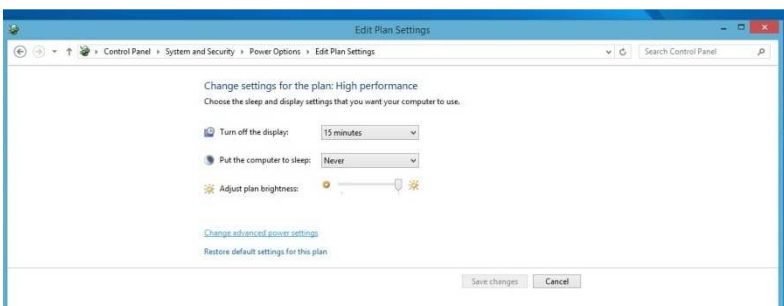
30.) Go back to the "System and Security" screen and click on "Power Options"



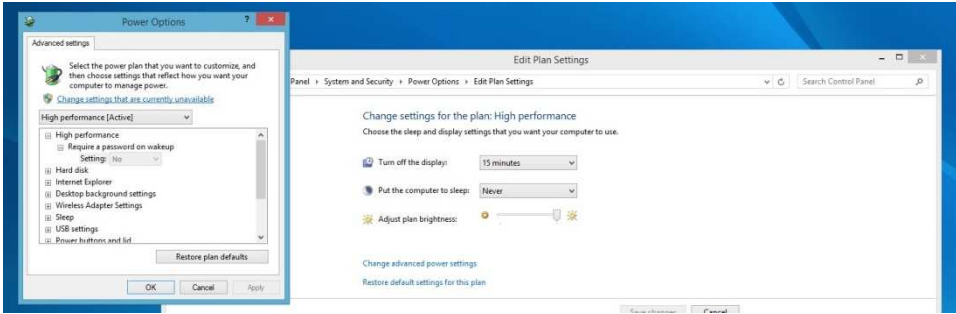
31.) Click on the circle with an arrow to bring up the "additional plans" then select "High performance" and click "Change plan settings".



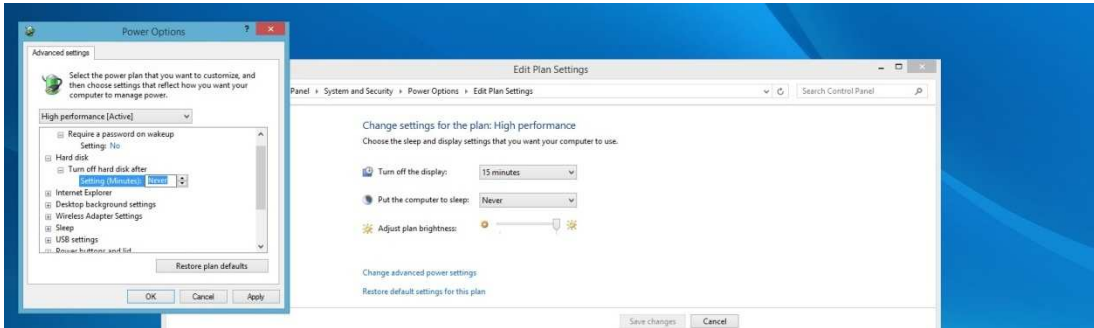
32.) Click on the "Change advanced power settings".



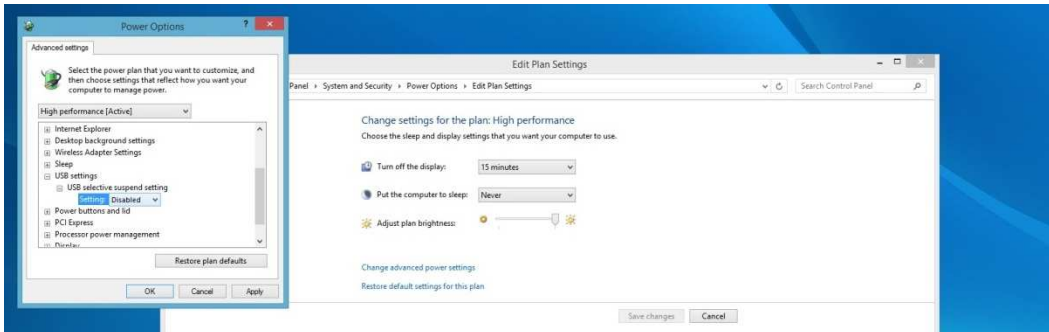
33.) Click on the "Change settings that are currently unavailable".



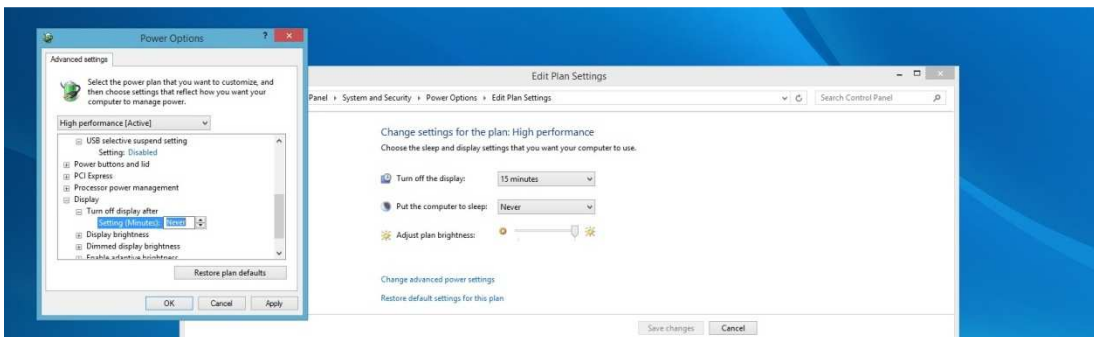
34.) Under "Hard disk" set "Turn off hard disk after" to "Never"



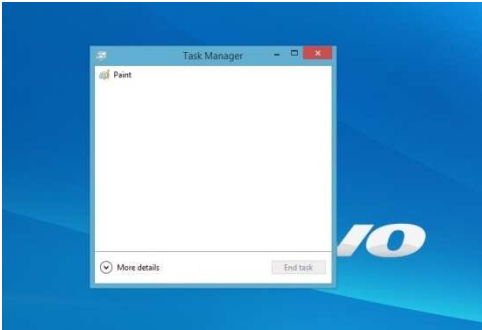
35.) Under the "USB settings", for "USB selective suspend setting" select "Disabled"



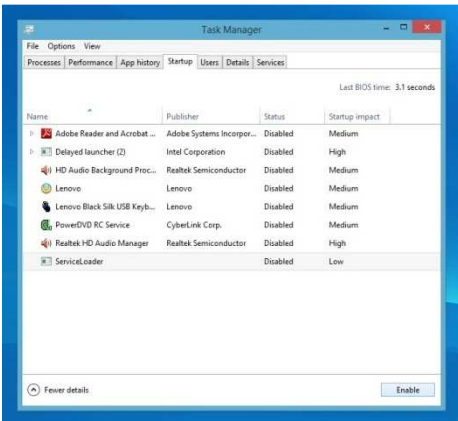
36.) Under "Display" set "Turn off display after" to "Never". Then click "Apply". Then close the open window.



37.) Press "Ctrl" + "Alt" + "Delete" all at the same time. Select "Task Manager", then click on the more details button.



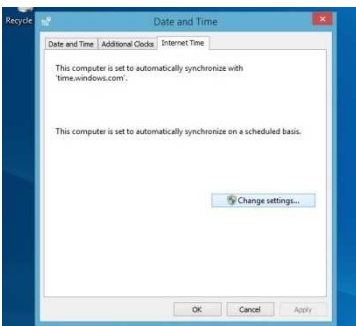
38.) Next click on the "Startup" tab and click on each Item and then click "Disable" at the bottom. Then close the window.



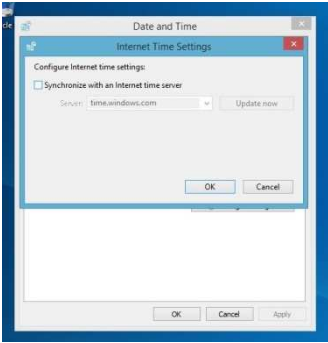
39.) Click on the "Date and Time" section of the taskbar on the lower right hand corner.



40.) Select the "Internet Time" tab and click on "Change settings..."



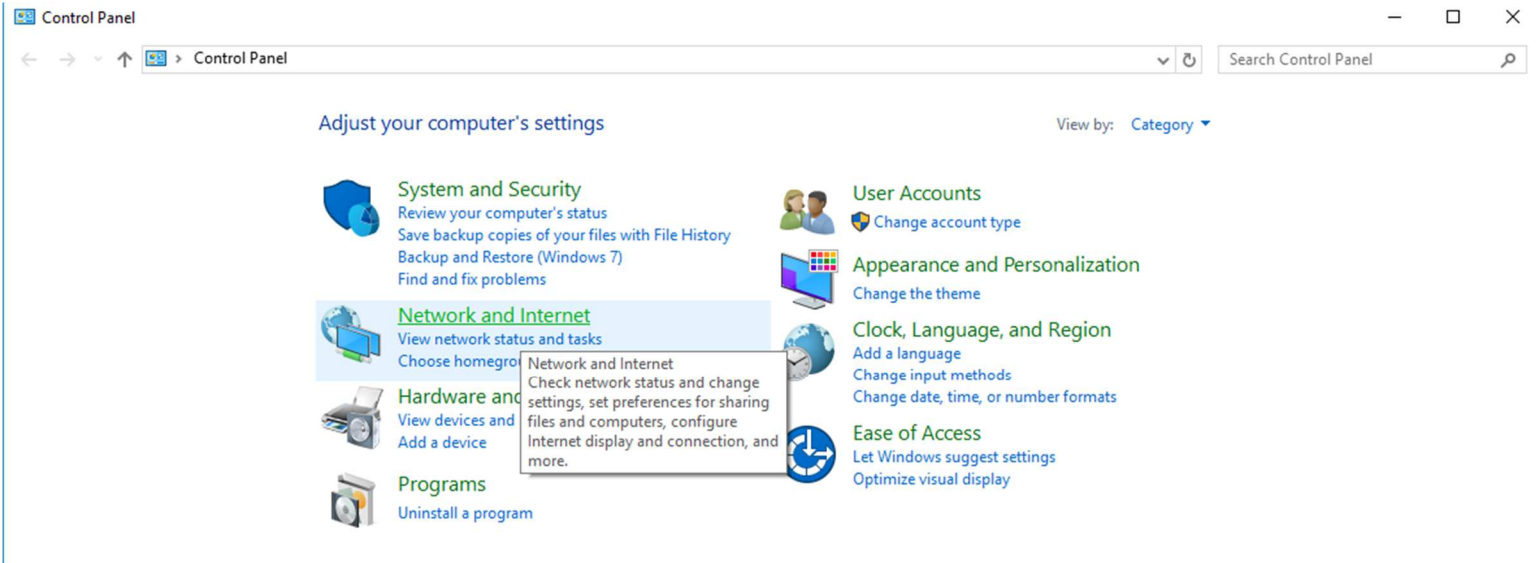
41.) Uncheck the "Synchronize with an Internet time server" box and click OK.



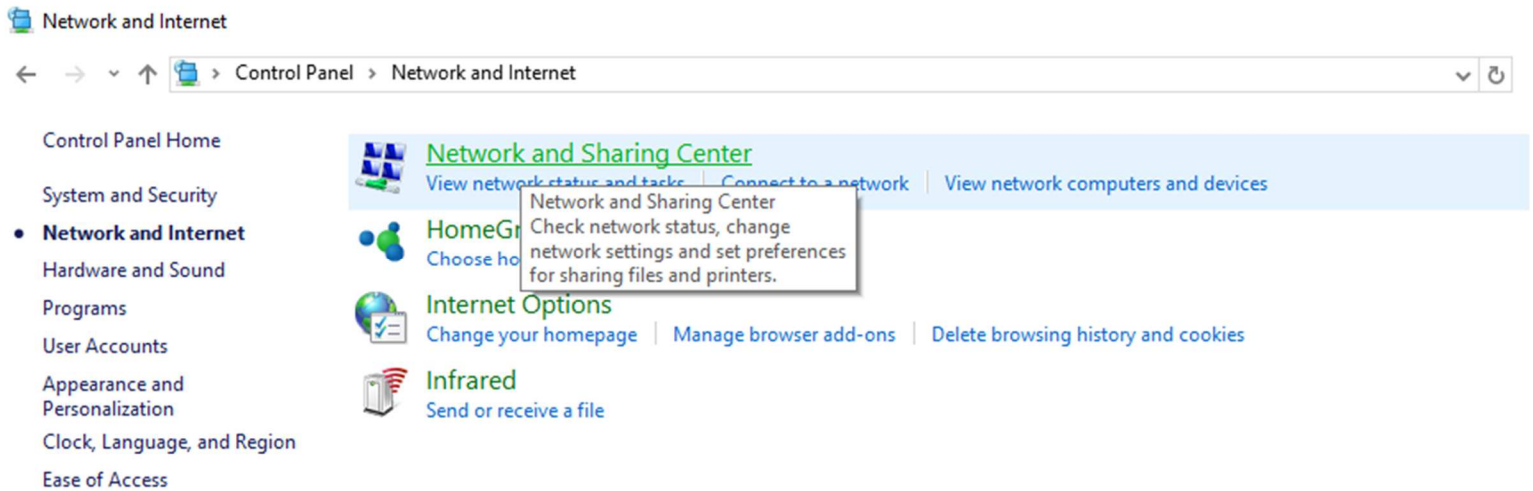
### Instructions for Installing CNC11 Software

- 1.) Install CNC11 software. Make sure you configure the network adapter and install the appropriate PLC program if needed. Also, if you want the PLC Detective software, you will need to install WinPcap.
- 2.) Once the CNC11 software installation is complete, right click on the CNC11 icon located on the desktop and select "Properties". Select the "Shortcut" tab, then select "Advanced". Check the box for "Run as Admin". Select "OK", then "Apply", and then "OK".
- 3.) Go into "Control Panel", select "System and Security", and then "Windows Firewall". On the upper left side of the window click on "Allow a program or feature through Windows Firewall", find cncm or cnc1 in the list and check both boxes for private and public, then click Ok.
- 4.) If want to eliminate the scan & fix pop up and autoplay pop up when you plug in your USB stick, you will need to do the following. To suppress the scan & fix click on the Windows icon type: **msconfig** and click on the "Services Tab" then scroll down and uncheck "Shell Hardware Detection". Click "Apply" then "Ok" and then you will need to power cycle the PC. To suppress the autoplay click on Windows icon and type: **autoplay** then uncheck "use AutoPlay for all media and devices" and click "Save".
- 5.) You are now ready to run CNC11 software on your Windows 7/10 PC/console.
- 6.) If you clicked on the CNC11 icon to start the software and you are getting 64180 MPU11 not responding errors. You most likely didn't have the MPU11 connected to the PC when you installed the software. Check your Ethernet card to make sure it is configured properly.

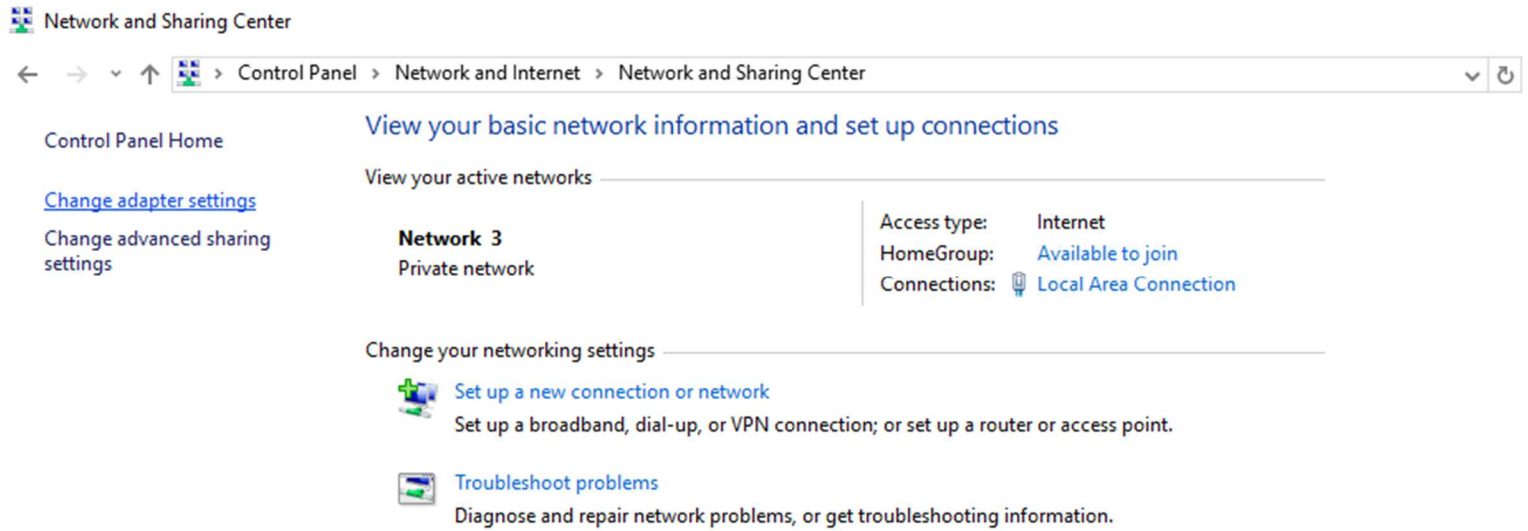
7.) Go to “Control Panel” and select “Network and Internet”.



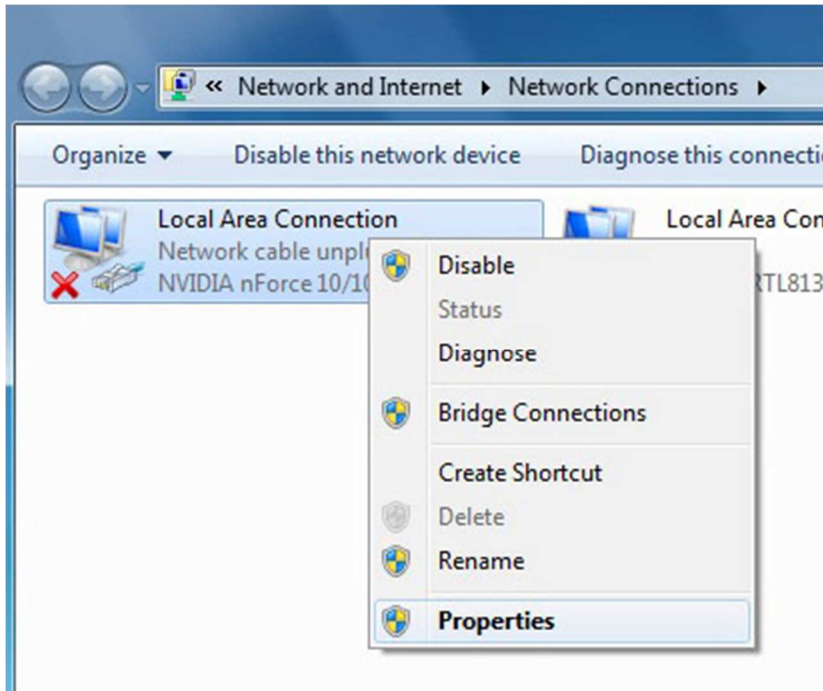
8.) Click on “Network and Sharing Center”.



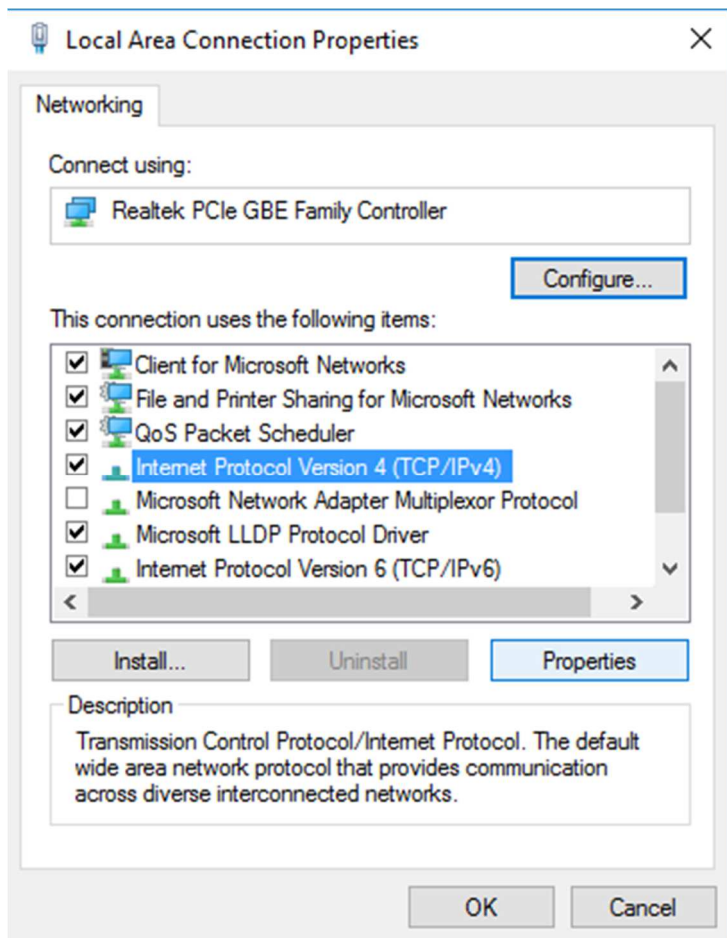
10.) Click on “Change adapter settings” on the upper left corner of the window.



11.) Right-click on the network icon that is connected to the MPU11 and select “Properties”.



12.) Highlight “Internet Protocol Version 4 (TCP/IPv4)” then click “Properties” again.

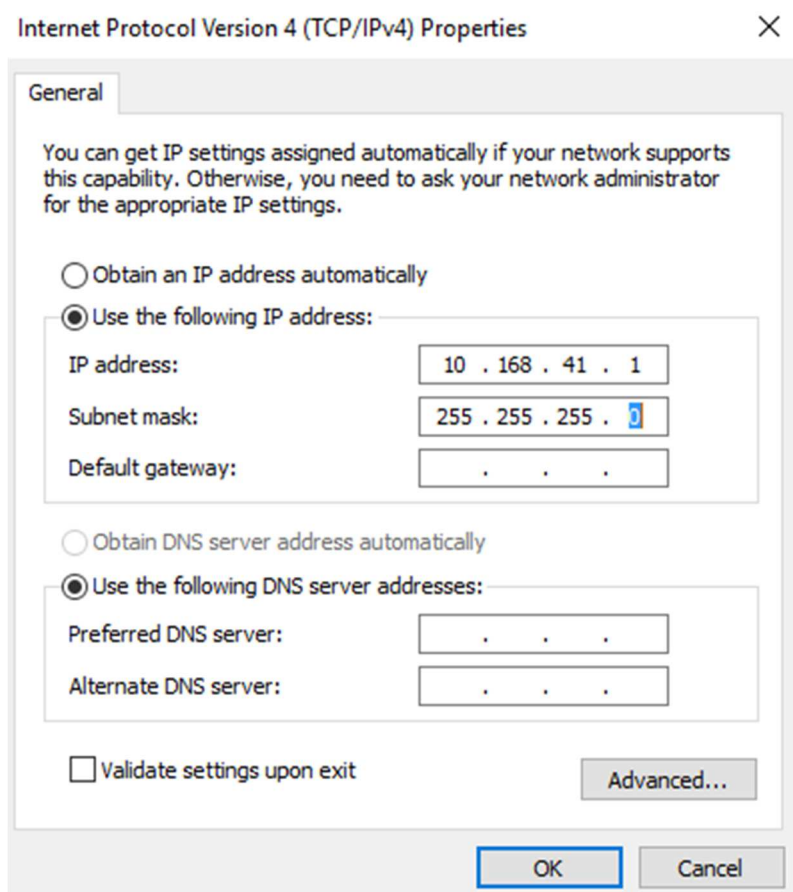




13.) Select “Use the following IP address” then set the IP address and Subnet mask to:

IP address: 10.168.41.1

Subnet mask: 255.255.255.0



14.) Click OK and then try to start the CNC11 software again.

---

#### Document History

Rev2 Created on 2017-02-22 by #270

[Rev1](#) Created on 2014-07-30 by #358