

TB259 (Rev1) - Important Windows 7 Settings for Systems Running SSD Hard Drives

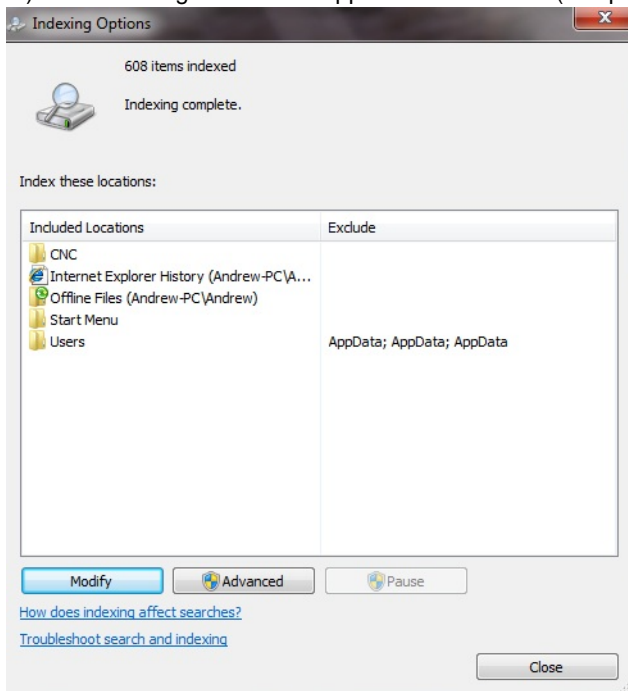
Notice: ALL systems that shipped before 03/21/2012 must have these settings configured to maintain proper operation.

Purpose: Centroid recently discovered some important settings in Windows 7 that need to be set when running an SSD. These settings are Indexing, Auto defrag, and Superfetch and must be turned off for proper operation of your SSD.

Instructions

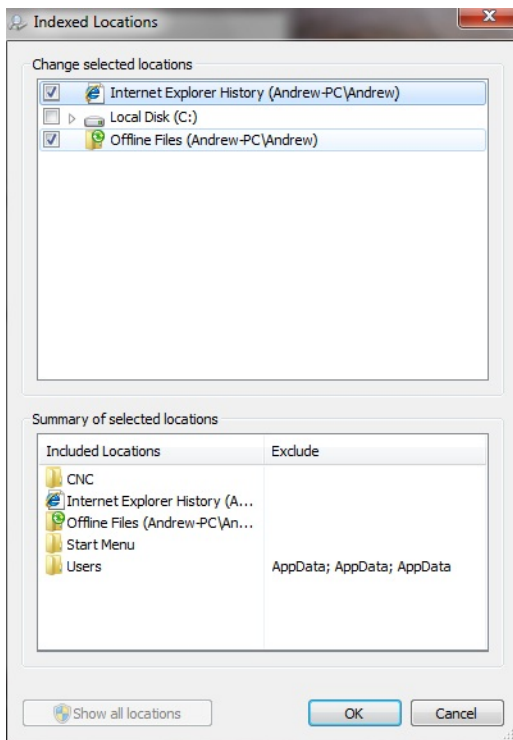
1.) First we will turn off Indexing, to do this click on the Windows icon on your task bar. In the search field, type: indexing, then click on "Indexing Options" in the search list.

2.) The following window will appear on the screen (see picture 1).



Picture 1: Indexing Options Window

3.) Click on the "Modify" button, and uncheck "C:drive" then click on "Ok" (see picture 2).

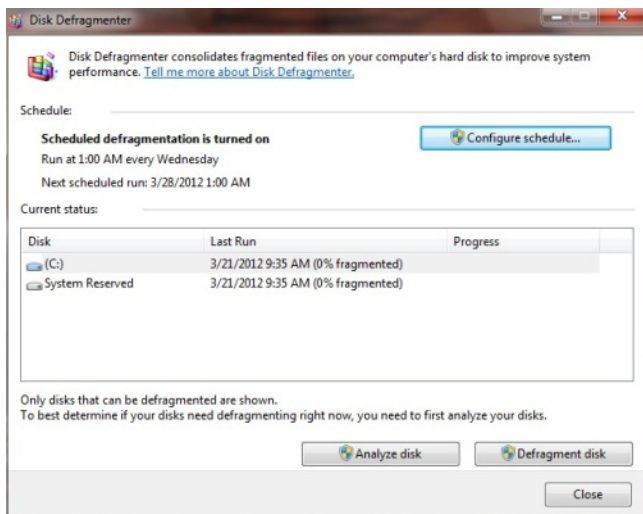


Picture 2: Index Modify Window

4.) Click "Close" to close the "Indexing Options" window.

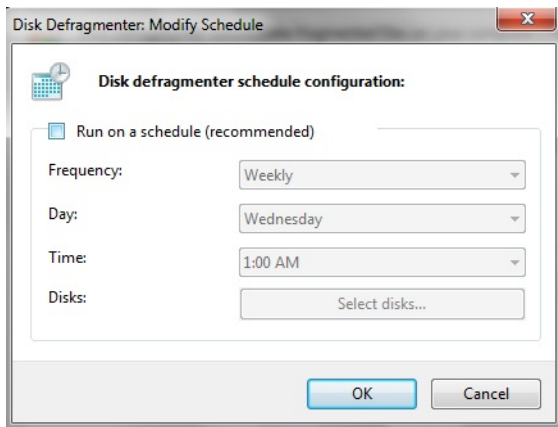
5.) Next we will turn off Auto defrag, so click on the Windows icon again. This time type: defrag into the search field. Select "Disk Defragmenter" in the search list.

6.) The following window will come up (see picture 3). Click on the "Configure Schedule" button towards the upper right corner of the window.



Picture 3: Disk Defragmenter Window

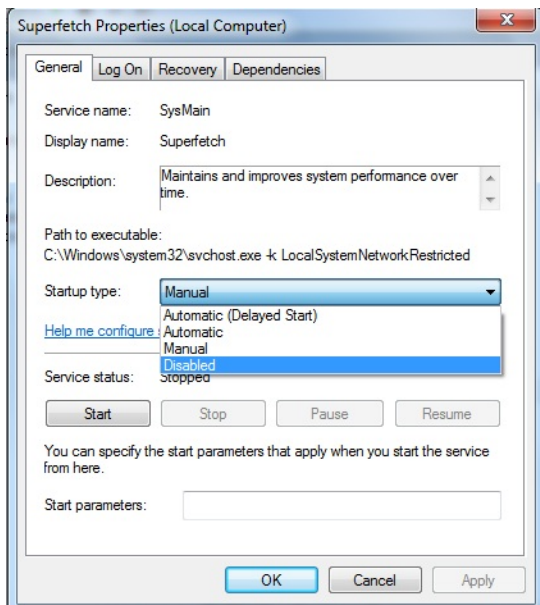
7.) Uncheck "Run on a schedule" and click "Ok" (see picture 4). Close that window.



Picture 4: Defrag Schedule Window

8.) The last thing we will do is disable Superfetch. Click on the Windows icon, type: services.msc. This will bring up the "Services" window, scroll down the list until you see Superfetch and double click on it. (note: the list is alphabetical)

9.) Beside "Startup type:" drop down the options and select disable (see picture 5). Click "Ok" to close the dialog box, then close the "Services" window.



Picture 5: Superfetch Properties Window

10.) Power cycle your control, and now you system is optimized for SSD usage.

Document History

Rev1 Created on **2012-03-22** by **#240**