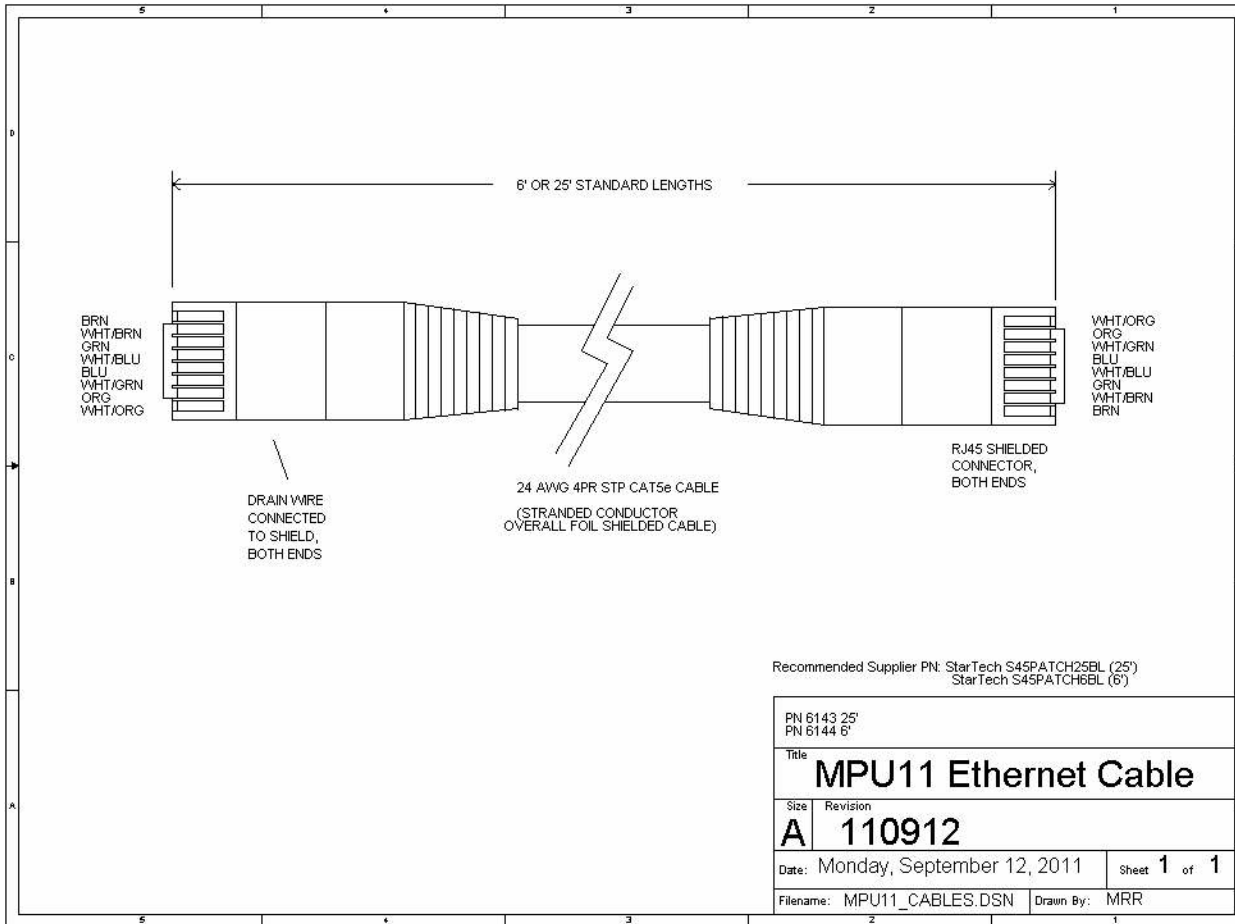


# TB251 (Rev1) - Type of Ethernet Cable to use for CNC11 Systems

## Background

Since CNC11 systems communicate to the Centroid hardware via the Ethernet cable, erroneous errors could arise due to noise seen on the signals of the Ethernet cable. To minimize this issue, a shielded Cat5e cable must be used. One can build their own Ethernet cable by following the diagram below. Centroid recommends purchasing the blue Cat5e shielded F/UTP snagless patch cables from StarTech, StarTech ID # S45PATCH25BL.



## Document History

Rev1 Created on **2011-09-14** by **#000**