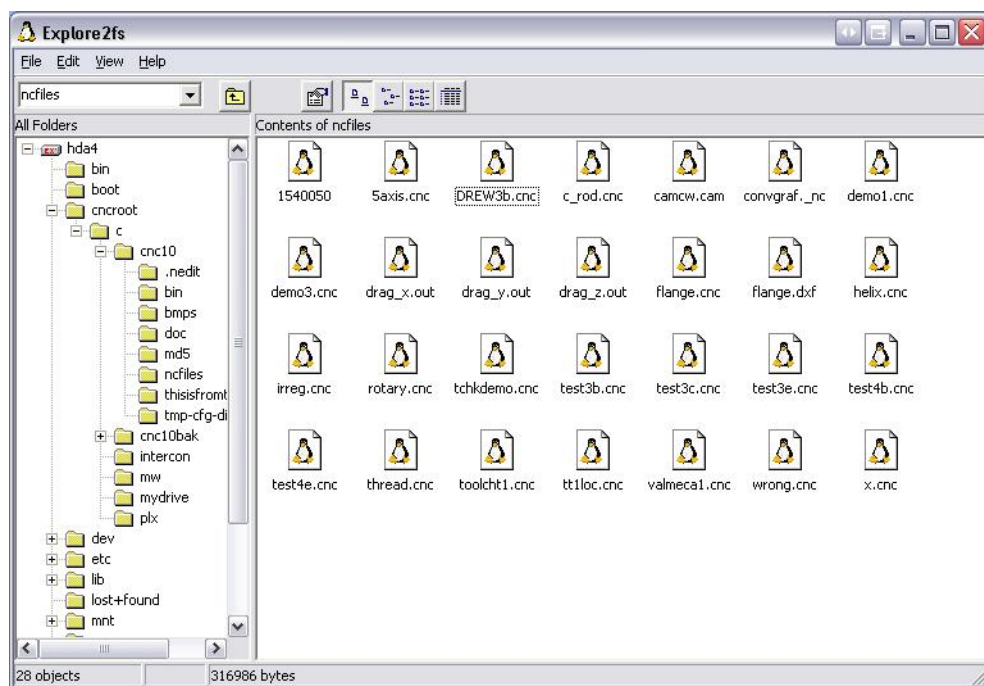


## TB200 (Rev1) - Read a Linux FC in Windows

---

View and copy Linux based files from a Centroid CNC flash card on your Windows PC using Explore2FS. This tool allows you to view and copy/paste any files from a Linux based CENTROID CNC flash card to your Windows PC. Useful for retrieving system configuration files and part program files. All you'll need is the explore2fs.exe program and a usb compact flash card reader.

- 1 - Download the explore2fs program from <http://www.chrysocome.net/explore2fs>
- 2 - Unzip the file to a folder on your windows computer
- 3 - Plug in the Linux FC from the control to the compact flash reader on the window computer.
- 4 - Run the explore2fs.exe program to view the Linux files. You can even drag and drop files from the Linux FC to your desktop.



---

### Document History

Rev1 Created on *2007-03-05* by *#300*