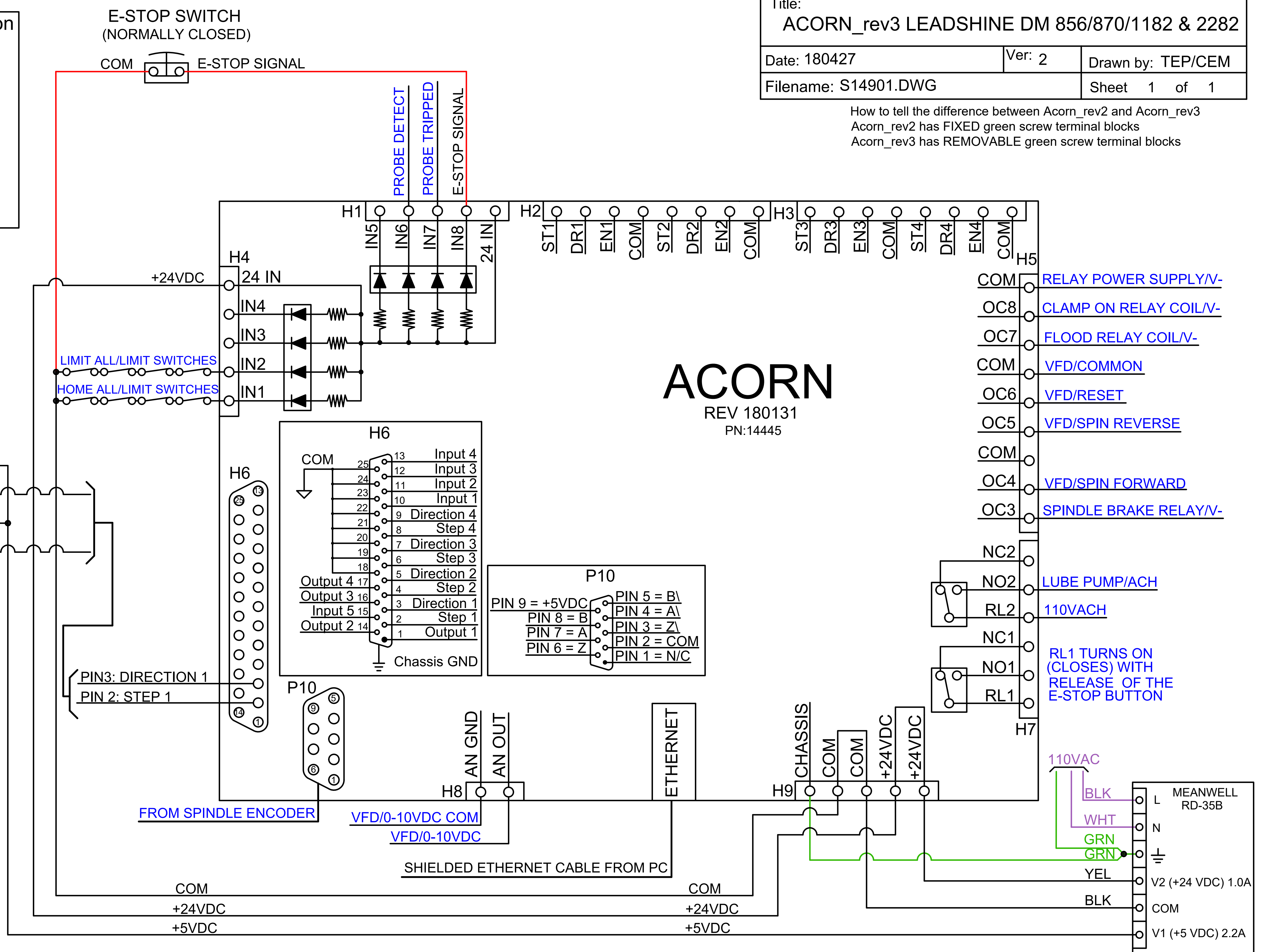
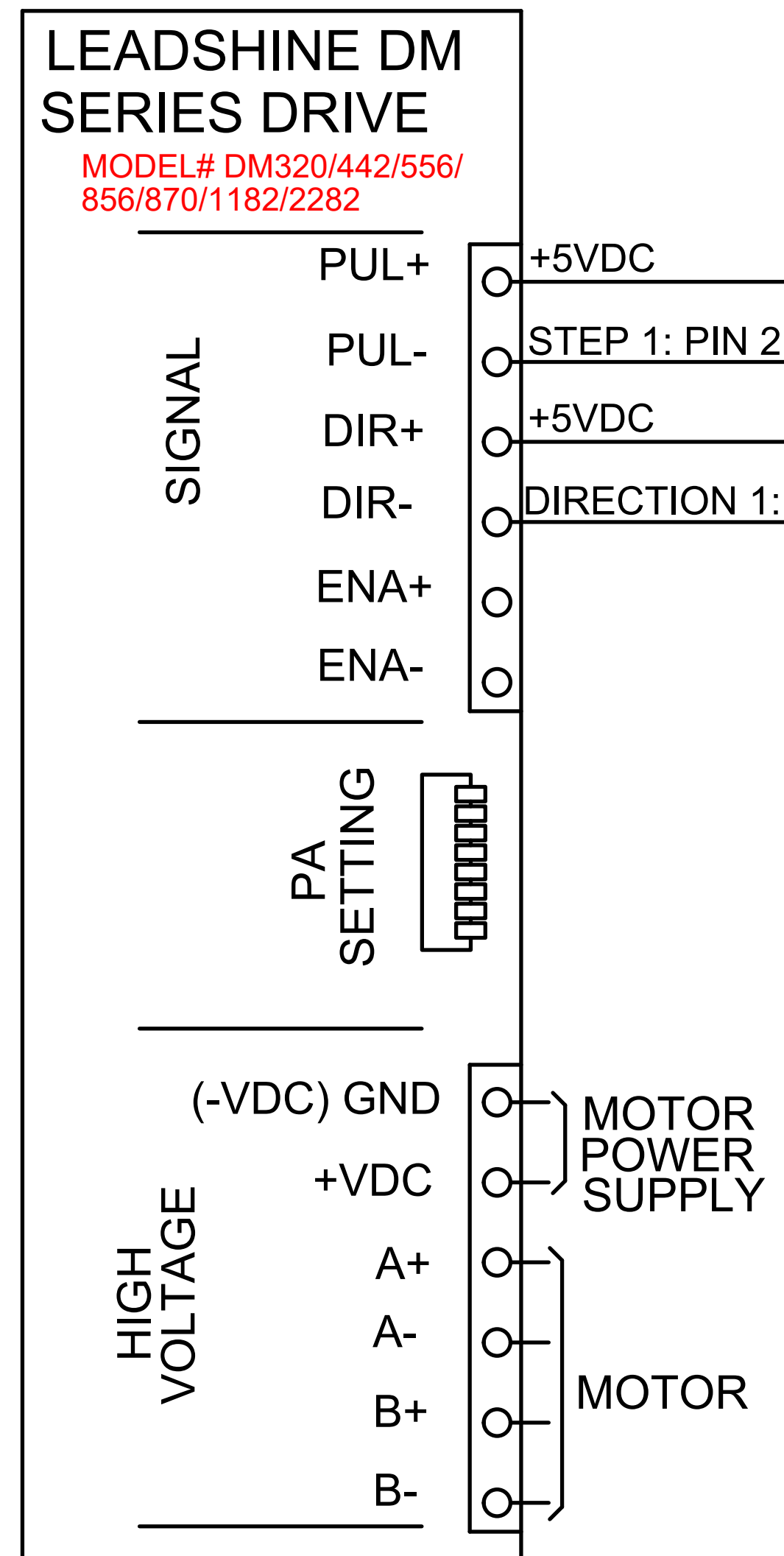


A Standard Leadshine configuration as selected by the WIZARD

- 1.) Primary System Configuration
- Choose: "leadshine" Radio button
- Input 1: HomeAll, NC
- Input 2: LimitAll, NC
- Input 5: Unused
- Input 6: ProbeDetect, NC or Unused
- Input 7: ProbeTripped, NC or Unused
- Input 8: EStopOk, NC
- 5.) DB25 Signal Mapping
- Header Selection: Select "DB25"

Title: ACORN_rev3 LEADSHINE DM 856/870/1182 & 2282		
Date: 180427	Ver: 2	Drawn by: TEP/CEM
Filename: S14901.DWG		Sheet 1 of 1

How to tell the difference between Acorn_rev2 and Acorn_rev3
 Acorn_rev2 has FIXED green screw terminal blocks
 Acorn_rev3 has REMOVABLE green screw terminal blocks



SEE DRIVE MANUAL FOR SETTINGS & MOTOR CONNECTIONS

E-STOP CIRCUITS ARE RED
 OPTIONAL CONNECTIONS ARE BLUE
 GROUNDS ARE GREEN
 110VAC IS VIOLET