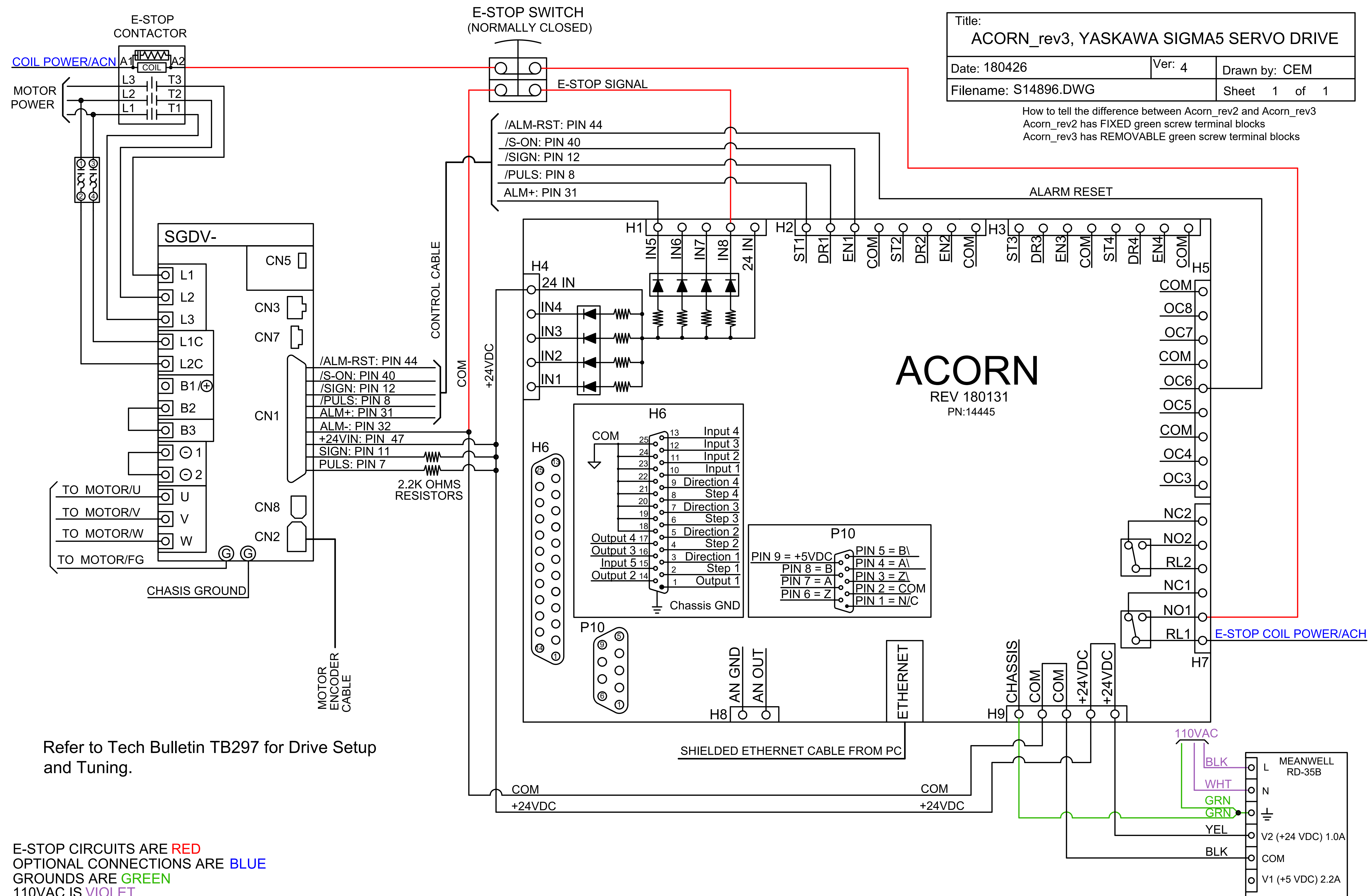


Title: ACORN_rev3, YASKAWA SIGMA5 SERVO DRIVE		
Date: 180426	Ver: 4	Drawn by: CEM
Filename: S14896.DWG	Sheet 1 of 1	

How to tell the difference between Acorn_rev2 and Acorn_rev3
 Acorn_rev2 has FIXED green screw terminal blocks
 Acorn_rev3 has REMOVABLE green screw terminal blocks



ACORN
 REV 180131
 PN:14445

Refer to Tech Bulletin TB297 for Drive Setup and Tuning.

E-STOP CIRCUITS ARE RED
 OPTIONAL CONNECTIONS ARE BLUE
 GROUNDS ARE GREEN
 110VAC IS VIOLET