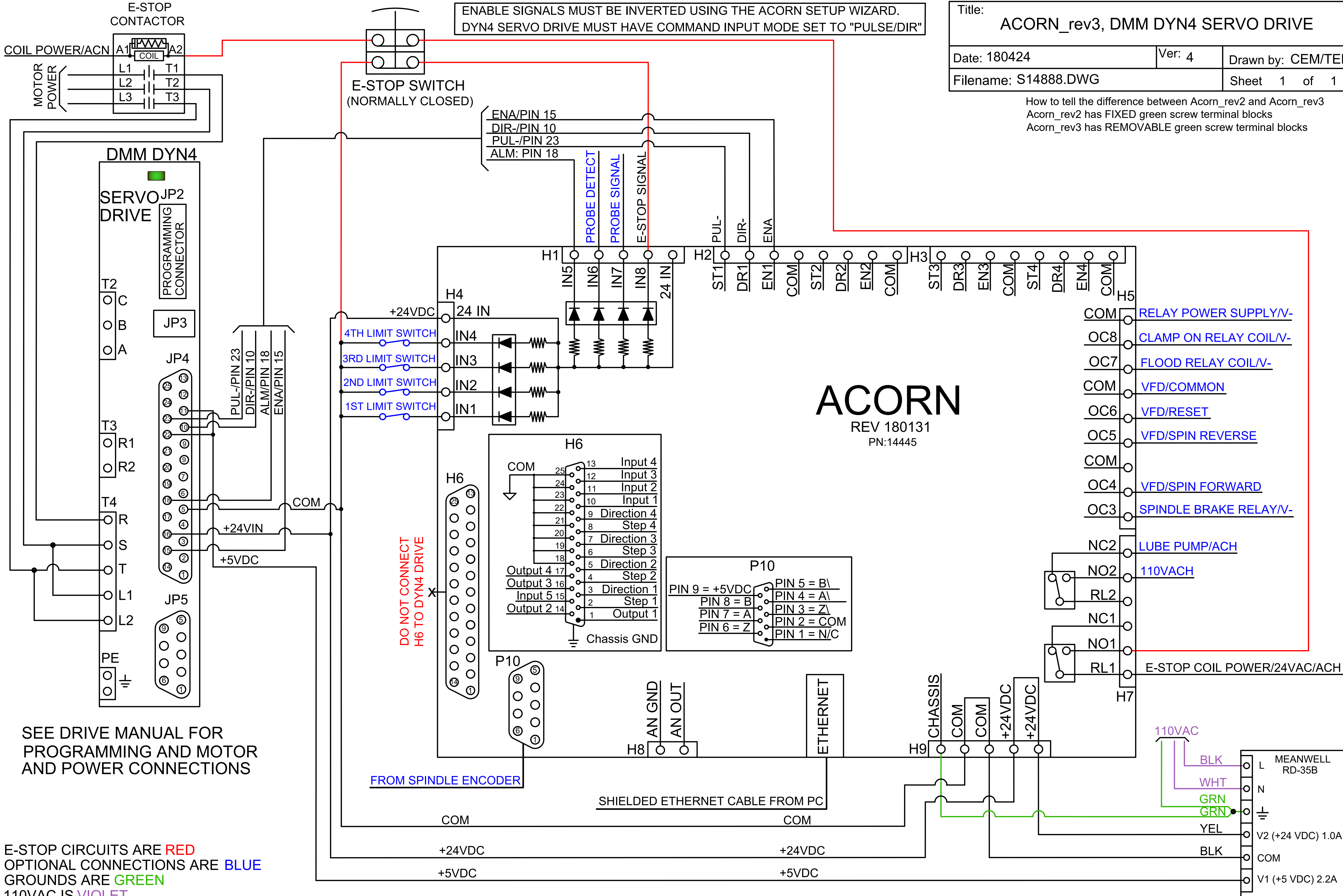


ENABLE SIGNALS MUST BE INVERTED USING THE ACORN SETUP WIZARD.
 DYN4 SERVO DRIVE MUST HAVE COMMAND INPUT MODE SET TO "PULSE/DIR"

How to tell the difference between Acorn_rev2 and Acorn_rev3
 Acorn_rev2 has FIXED green screw terminal blocks
 Acorn_rev3 has REMOVABLE green screw terminal blocks



ACORN
 REV 180131
 PN:14445

SEE DRIVE MANUAL FOR PROGRAMMING AND MOTOR AND POWER CONNECTIONS

E-STOP CIRCUITS ARE RED
 OPTIONAL CONNECTIONS ARE BLUE
 GROUNDS ARE GREEN
 110VAC IS VIOLET