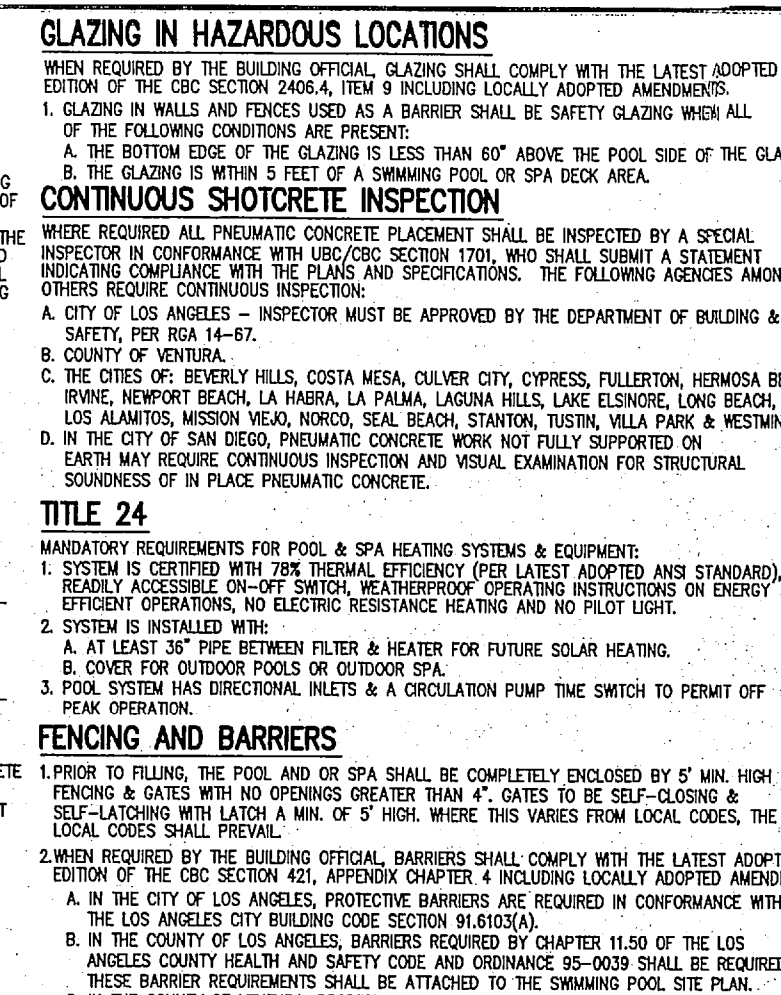
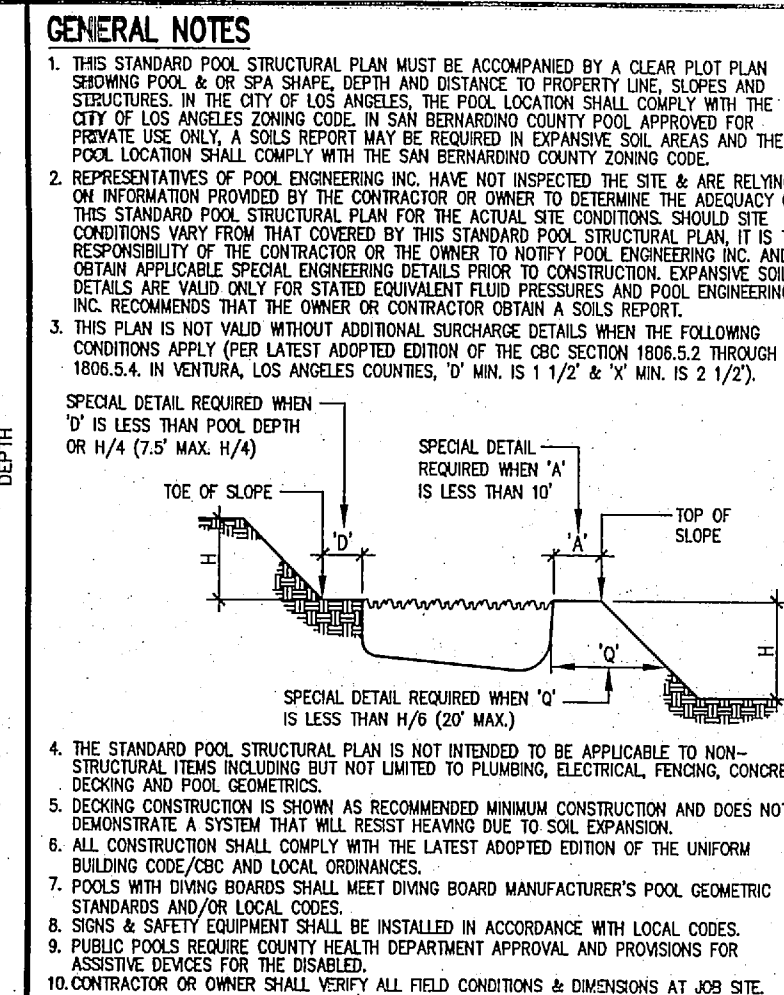
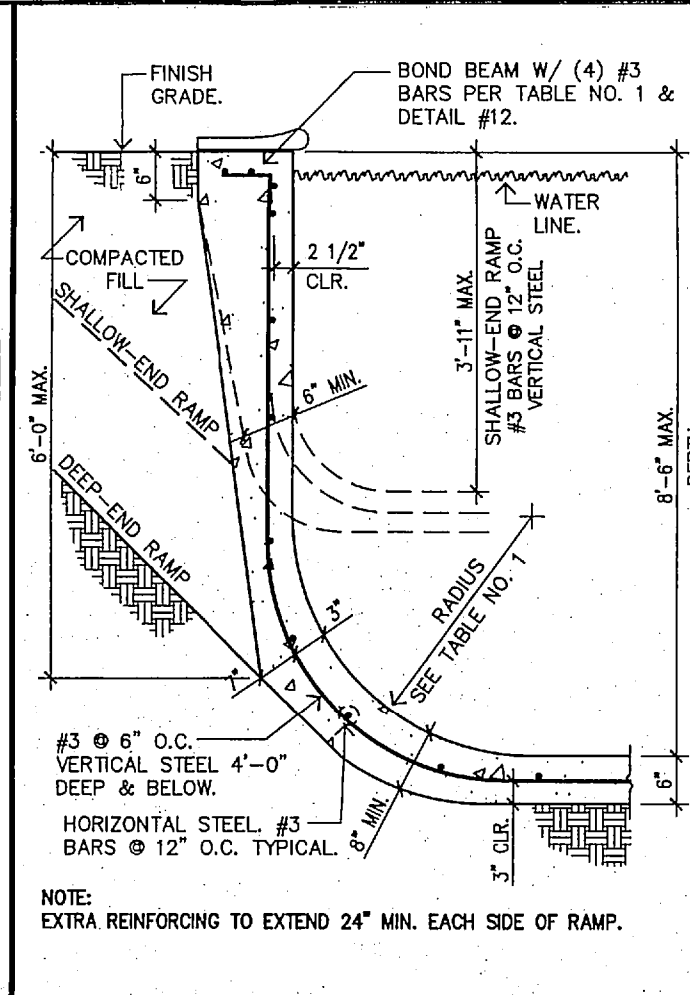
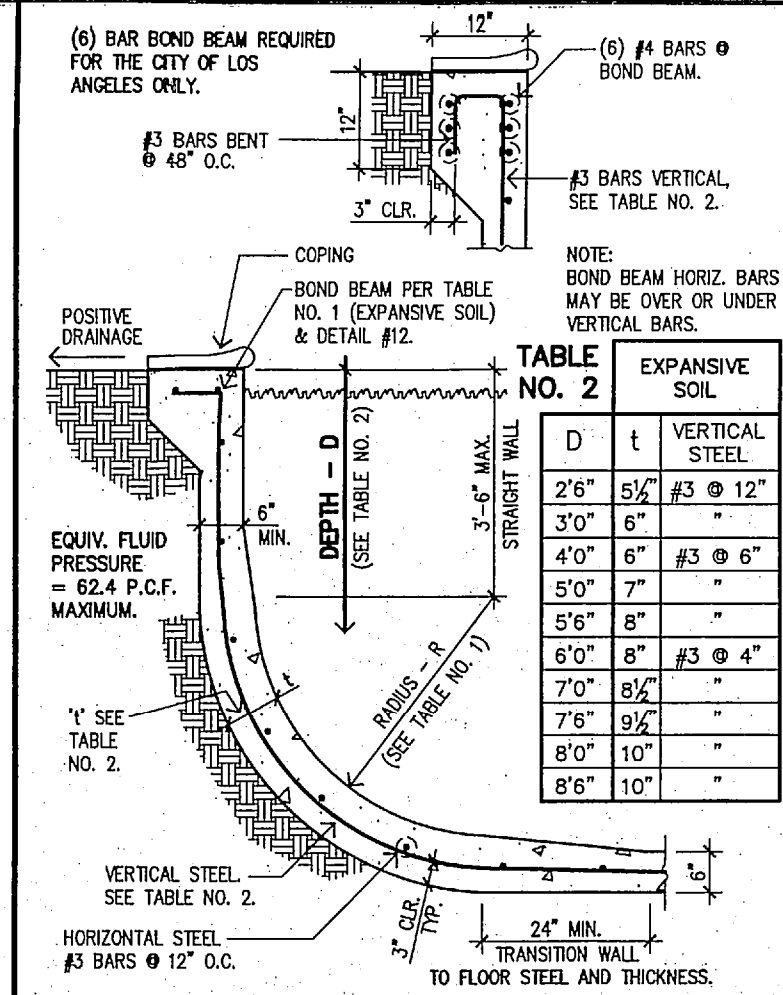


**TABLE NO. 1**

NON-EXPANSIVE SOIL EQUIVALENT FLUID PRESSURE = 30 P.C.F.		EXPANSIVE SOIL EQUIVALENT FLUID PRESSURE = 45 P.C.F.	
D	R	t	VERTICAL STEEL
3'0"	1'-0"	5 1/2"	#3 @ 12"
3'6"	1'-0"	5 1/2"	"
4'0"	1'-0"	5 1/2"	"
4'6"	1'-0"	5 1/2"	"
5'0"	1'-6"	6"	"
5'6"	2'-0"	6"	#3 @ 6"
6'0"	2'-6"	6"	7/8"
6'6"	3'-0"	6"	"
7'0"	3'-6"	6"	8 1/2"
7'6"	4'-0"	6 1/2"	"
8'0"	4'-6"	6 1/2"	"
8'6"	5'-0"	6 1/2"	"

NOTE: BOND BEAM HORIZONTAL BARS MAY BE OVER OR UNDER VERTICAL BARS. TYPICAL INCLUDING ALL SPECIAL DETAILS.



**STANDARD WALL SECTION**

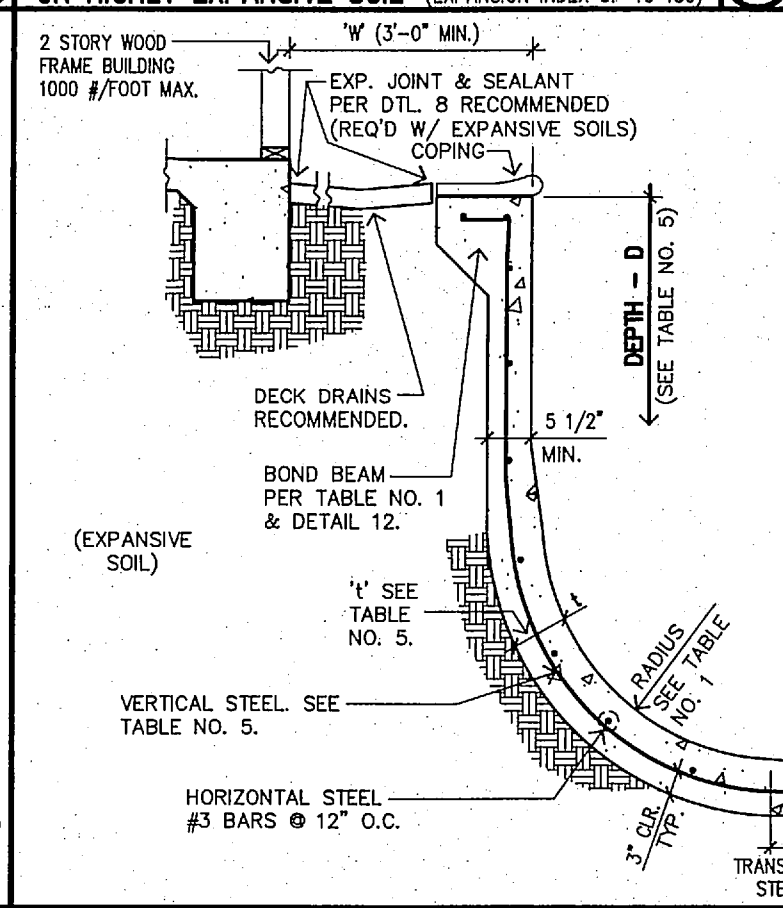
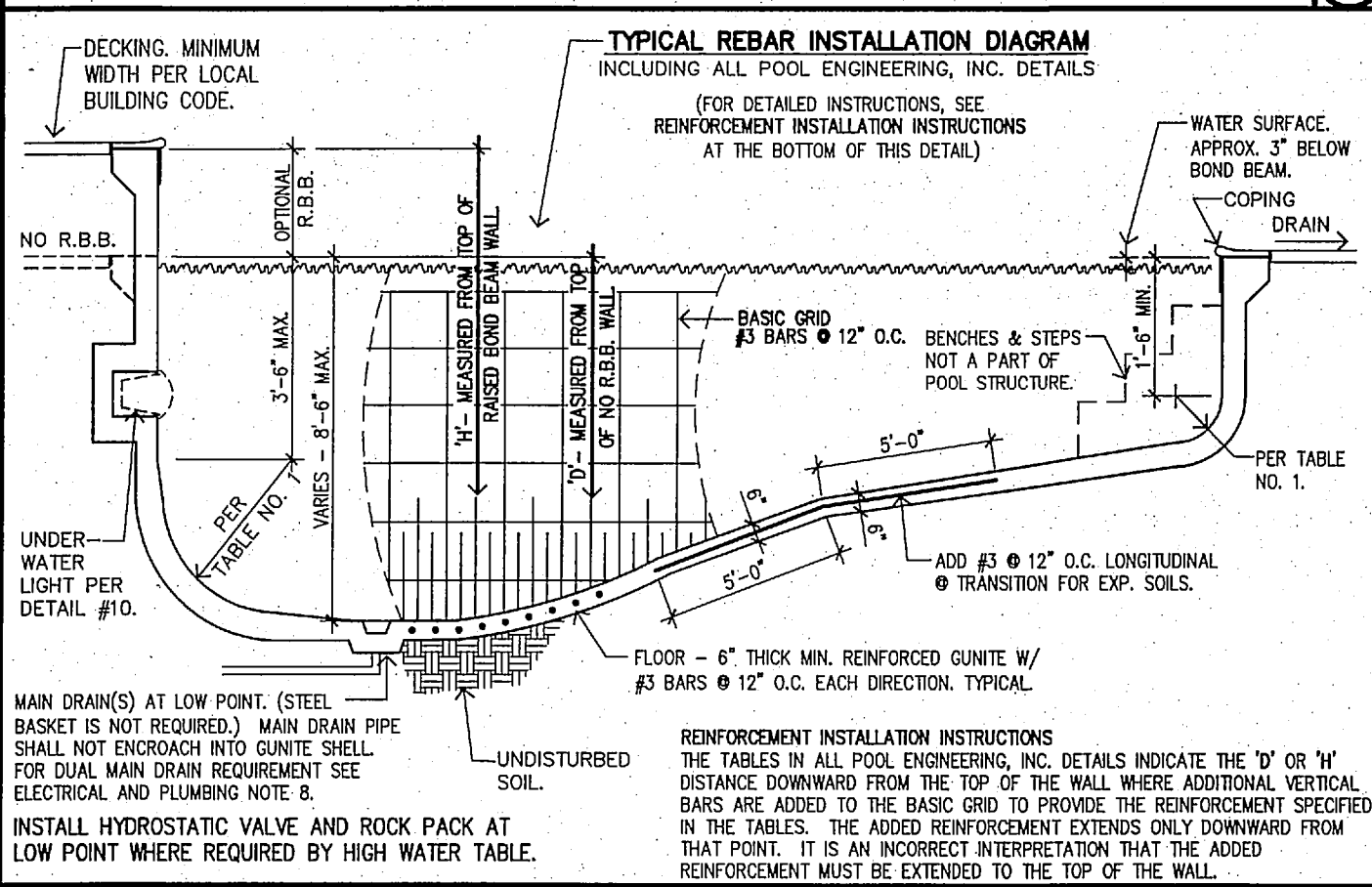
**1 NO DECK SECTION - EXPANSIVE SOIL (62.4 PCF) OR HIGHLY EXPANSIVE SOIL (EXPANSION INDEX UP TO 130)**

**2 SHALLOW/DEEP END RAMP**

**3 BUILDING SURCHARGE SECTION**

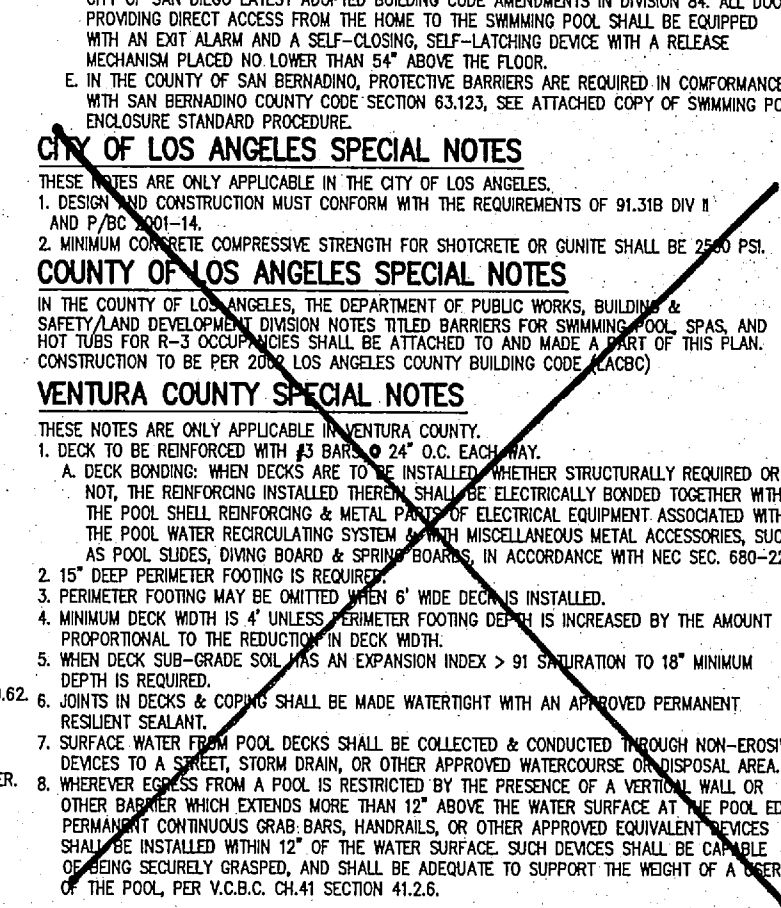
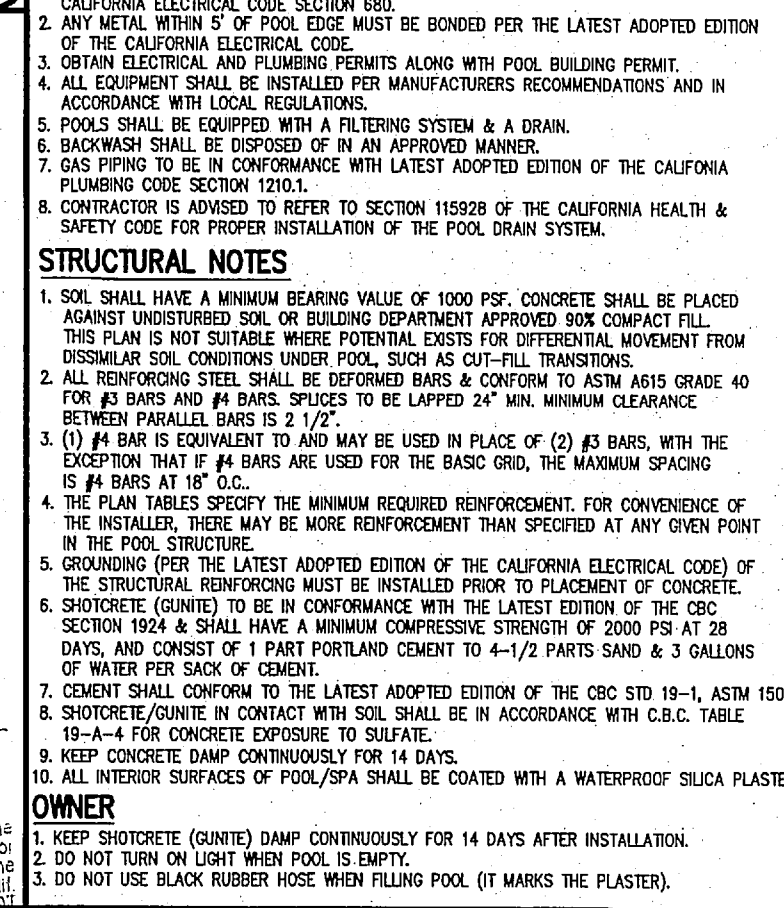
**4 TYPICAL LONGITUDINAL SECTION**

**5 NOTES**



**TABLE NO. 5** EQUIVALENT FLUID PRESSURE = 45 P.C.F.

D	W=3'-0"		W=4'-0"		W=5'-0"		W=6'-0"	
	t	VERTICAL STEEL	t	VERTICAL STEEL	t	VERTICAL STEEL	t	VERTICAL STEEL
2'0"	5 1/2"	#3 @ 12"	5 1/2"	#3 @ 12"	5 1/2"	#3 @ 12"	5 1/2"	#3 @ 12"
2'6"	5 1/2"	"	5 1/2"	"	5 1/2"	"	5 1/2"	"
3'0"	5 1/2"	"	5 1/2"	"	5 1/2"	"	5 1/2"	"
3'6"	5 1/2"	#3 @ 6"	5 1/2"	#3 @ 6"	5 1/2"	#3 @ 6"	5 1/2"	#3 @ 6"
4'0"	6"	"	5 1/2"	"	5 1/2"	"	5 1/2"	"
4'6"	6 1/2"	#3 @ 4"	6"	#3 @ 4"	6"	#3 @ 4"	6"	#3 @ 4"
5'0"	7"	"	6"	"	6"	"	6"	"
5'6"	7 1/2"	"	7"	"	7"	"	7"	"
6'0"	8"	"	7 1/2"	"	7 1/2"	"	7 1/2"	"
6'6"	8 1/2"	#3 @ 3"	7 1/2"	#3 @ 3"	7 1/2"	#3 @ 3"	7 1/2"	#3 @ 3"
7'0"	9"	"	8"	"	8"	"	8"	"
7'6"	9 1/2"	"	8 1/2"	"	8 1/2"	"	8 1/2"	"
8'0"	9 1/2"	"	9"	"	9"	"	9"	"
8'6"	9 1/2"	"	9"	"	9"	"	9"	"



**6 TYPICAL LONGITUDINAL SECTION**

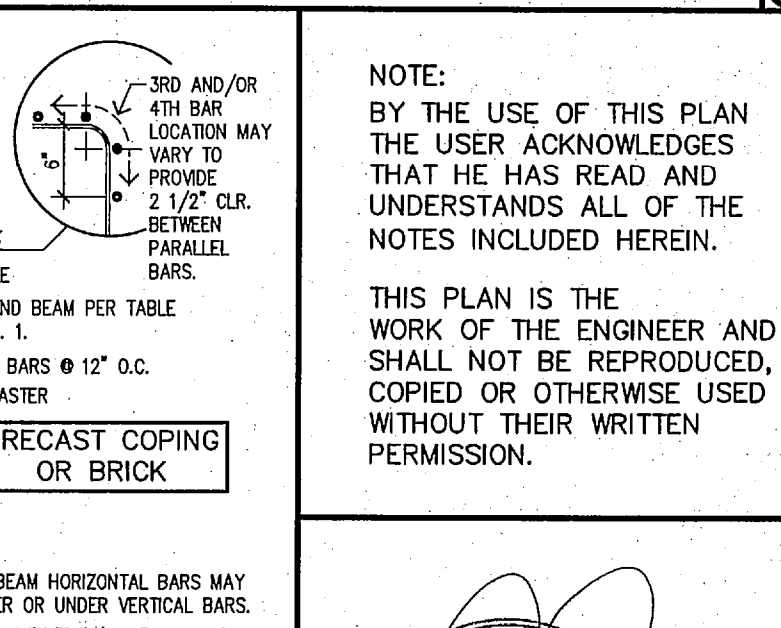
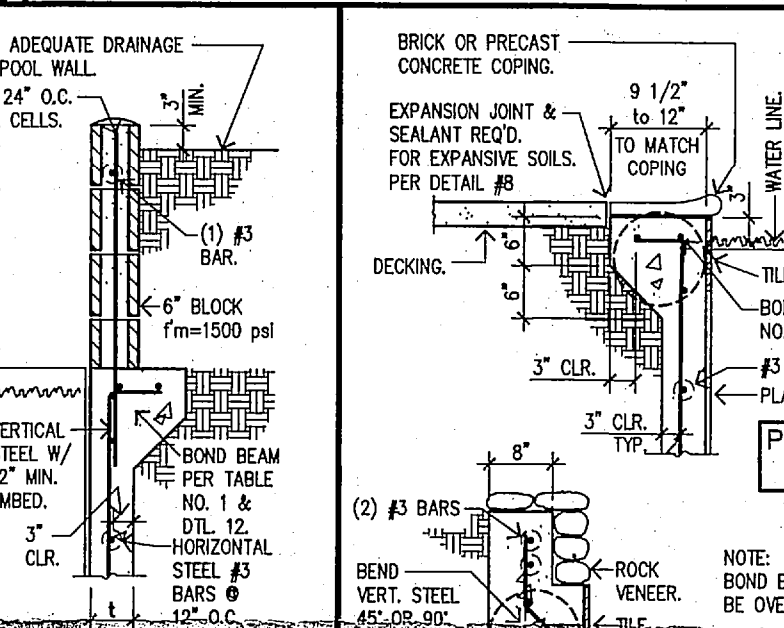
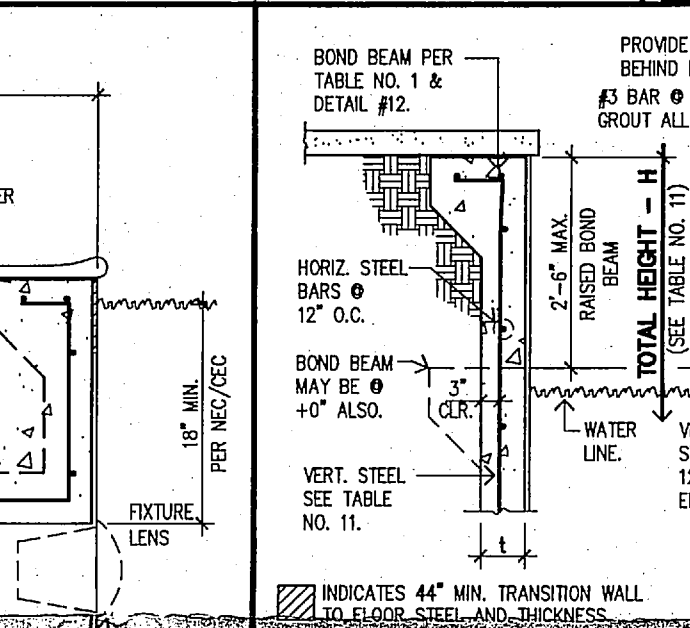
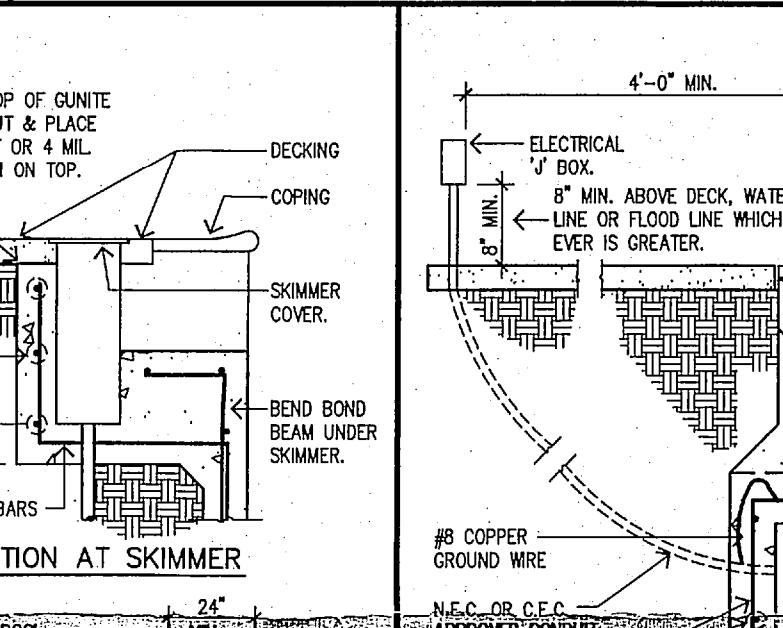
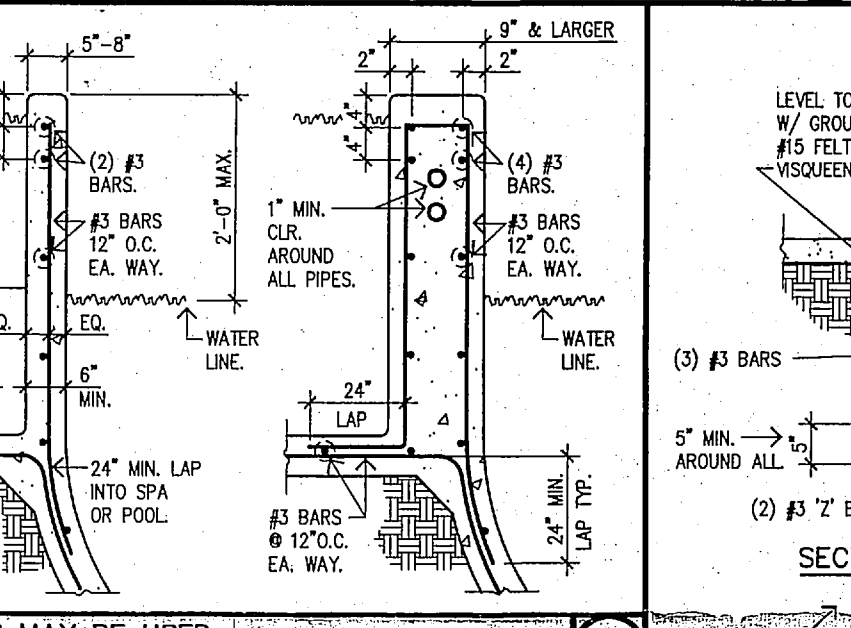
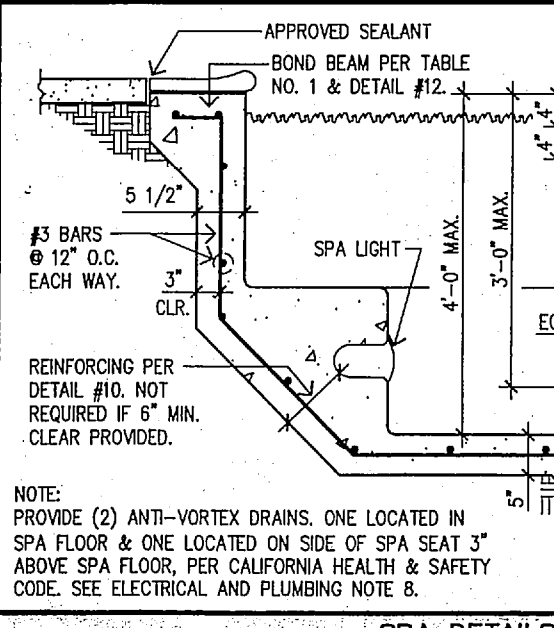
**7 SPA DETAILS**

**8 SKIMMER DETAIL**

**9 SECTION AT LIGHT**

**10 RAISED BOND BEAM**

**11 BOND BEAM DETAILS**



**12 STANDARD PLAN APPROVALS:**

**13 SPA DETAILS - SPA DETAILS MAY BE USED FOR SPAS WITHOUT POOLS.**

**14 SKIMMER DETAIL**

**15 SECTION AT LIGHT**

**16 RAISED BOND BEAM**

**17 BOND BEAM DETAILS**

**STANDARD PLAN APPROVALS:**

CITY OF LOS ANGELES:	#268
CITY OF ONTARIO:	APPROVED FOR 97 UBC
SAN DIEGO:	MP #92
SIMI VALLEY:	SP1 REQ'S SIMI VALLEY NOTES ATTACHMENT
SANTA CLARITA:	#306 REQ'S SUPPLEMENTAL NOTES

**18 EXPANSIVE SOIL DETAILS**

IN EXPANSIVE SOILS WHERE MIN DECK REOMTS ARE NOT MET USE DET. #2. IN NOTES SECT FOR DECK REOMTS.

**19 SKIMMER DETAIL**

NOTE: 1. INSTALL NO. 8 COPPER GROUND WIRE FROM LIGHT NICHE TO BRASS CONDUIT TO POOL REBAR, OR NON-METALLIC CONDUIT CAN BE USED WITH INSULATED NO. 8 COPPER WIRE INTERIOR W/ APPROVED POTTING COMPOUND PER THE N.E.C. OR C.E.C.

2. SWIMMING POOL LIGHTING FIXTURES SHALL COMPLY WITH APPLICABLE UNDERWRITERS' LABORATORIES REQUIREMENTS FOR LIGHTING FIXTURES U.L. STANDARD 676.

**20 SECTION AT LIGHT**

NOTE: 1. INSTALL NO. 8 COPPER GROUND WIRE FROM LIGHT NICHE TO BRASS CONDUIT TO POOL REBAR, OR NON-METALLIC CONDUIT CAN BE USED WITH INSULATED NO. 8 COPPER WIRE INTERIOR W/ APPROVED POTTING COMPOUND PER THE N.E.C. OR C.E.C.

2. SWIMMING POOL LIGHTING FIXTURES SHALL COMPLY WITH APPLICABLE UNDERWRITERS' LABORATORIES REQUIREMENTS FOR LIGHTING FIXTURES U.L. STANDARD 676.

**21 RAISED BOND BEAM**

NOTE: 1. INSTALL NO. 8 COPPER GROUND WIRE FROM LIGHT NICHE TO BRASS CONDUIT TO POOL REBAR, OR NON-METALLIC CONDUIT CAN BE USED WITH INSULATED NO. 8 COPPER WIRE INTERIOR W/ APPROVED POTTING COMPOUND PER THE N.E.C. OR C.E.C.

2. SWIMMING POOL LIGHTING FIXTURES SHALL COMPLY WITH APPLICABLE UNDERWRITERS' LABORATORIES REQUIREMENTS FOR LIGHTING FIXTURES U.L. STANDARD 676.

**22 BOND BEAM DETAILS**

NOTE: BOND BEAM HORIZONTAL BARS MAY BE OVER OR UNDER VERTICAL BARS.

**STANDARD PLAN APPROVALS:**

CITY OF LOS ANGELES:	#268
CITY OF ONTARIO:	APPROVED FOR 97 UBC
SAN DIEGO:	MP #92
SIMI VALLEY:	SP1 REQ'S SIMI VALLEY NOTES ATTACHMENT
SANTA CLARITA:	#306 REQ'S SUPPLEMENTAL NOTES

**23 SAN BERNARDINO:** #07-06890-225A-01

**RIVERSIDE COUNTY:** #342375

**ORANGE COUNTY:** #SW-05-0390 SHOTCRETE/GUNITE PER C.B.C. TBL 19-A-4 SEVERE EXPOSURE, IF NO TEST PERFORMED

**LOS ANGELES COUNTY:** #26077 CONSTRUCTION TO BE PER 2002 LOS ANGELES COUNTY BUILDING CODE

**VENTURA COUNTY:** #6-99 REQUIRES ATTACHMENT OF VENTURA COUNTY BARRIER REQUIREMENTS

**CITY OF BEVERLY HILLS:** #13 CONSTRUCTION TO BE PER 2001 C.B.C. AND BEVERLY HILLS MUNICIPAL CODE ARTICLE 6

**24 KERN COUNTY:** #213

**CITY OF FRESNO:** P-00-01 REQ'S SUPPLEMENTAL NOTES

**FRESNO COUNTY:** REQ'S SUPPLEMENTAL NOTES

**25 STANDARD PLAN APPROVALS:**

CITY OF LOS ANGELES:	#268
CITY OF ONTARIO:	APPROVED FOR 97 UBC
SAN DIEGO:	MP #92
SIMI VALLEY:	SP1 REQ'S SIMI VALLEY NOTES ATTACHMENT
SANTA CLARITA:	#306 REQ'S SUPPLEMENTAL NOTES

**26 STANDARD PLAN APPROVALS:**

CITY OF LOS ANGELES:	#268
CITY OF ONTARIO:	APPROVED FOR 97 UBC
SAN DIEGO:	MP #92
SIMI VALLEY:	SP1 REQ'S SIMI VALLEY NOTES ATTACHMENT
SANTA CLARITA:	#306 REQ'S SUPPLEMENTAL NOTES

**27 STANDARD PLAN APPROVALS:**

CITY OF LOS ANGELES:	#268
CITY OF ONTARIO:	APPROVED FOR 97 UBC
SAN DIEGO:	MP #92
SIMI VALLEY:	SP1 REQ'S SIMI VALLEY NOTES ATTACHMENT
SANTA CLARITA:	#306 REQ'S SUPPLEMENTAL NOTES