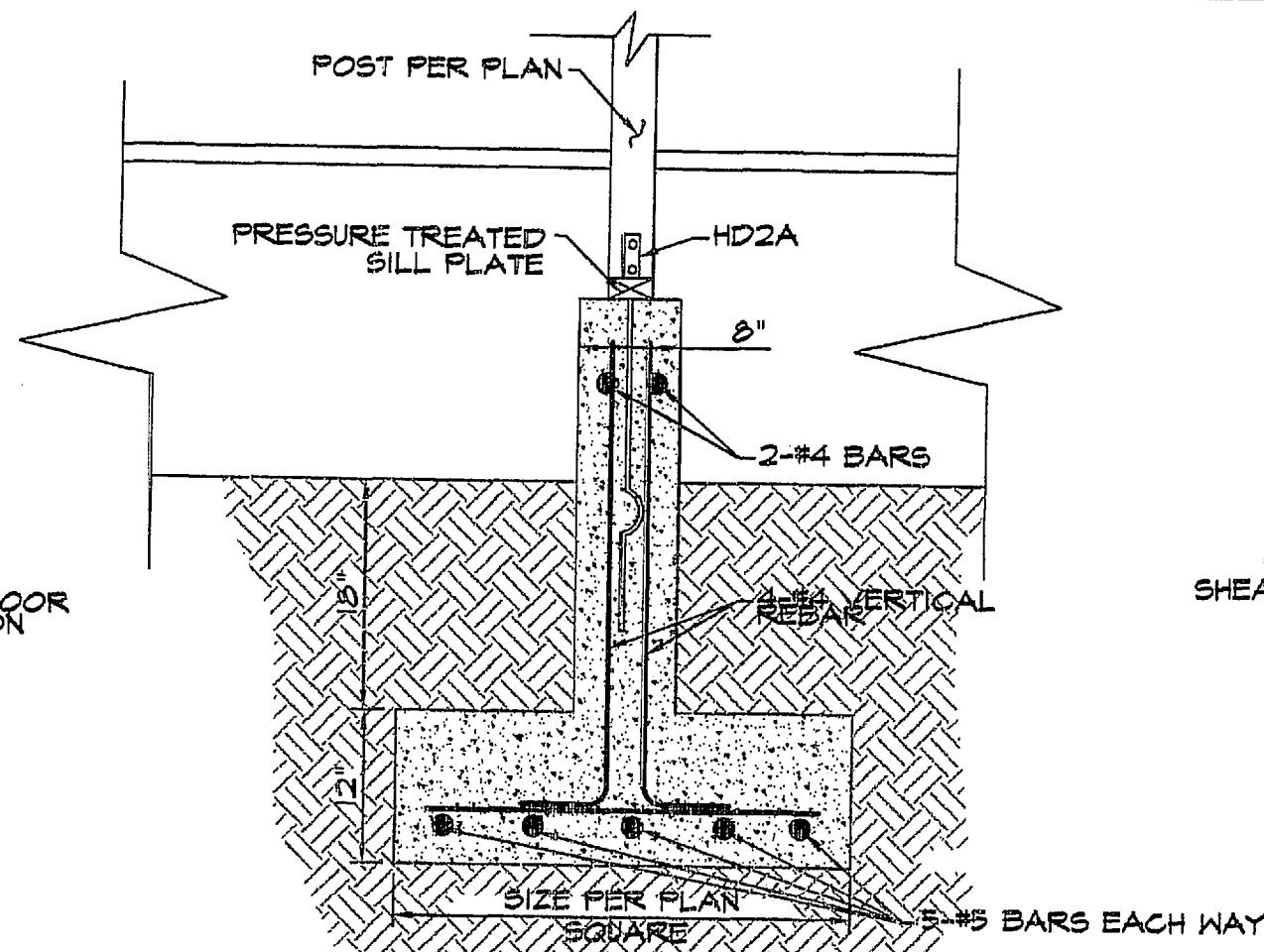
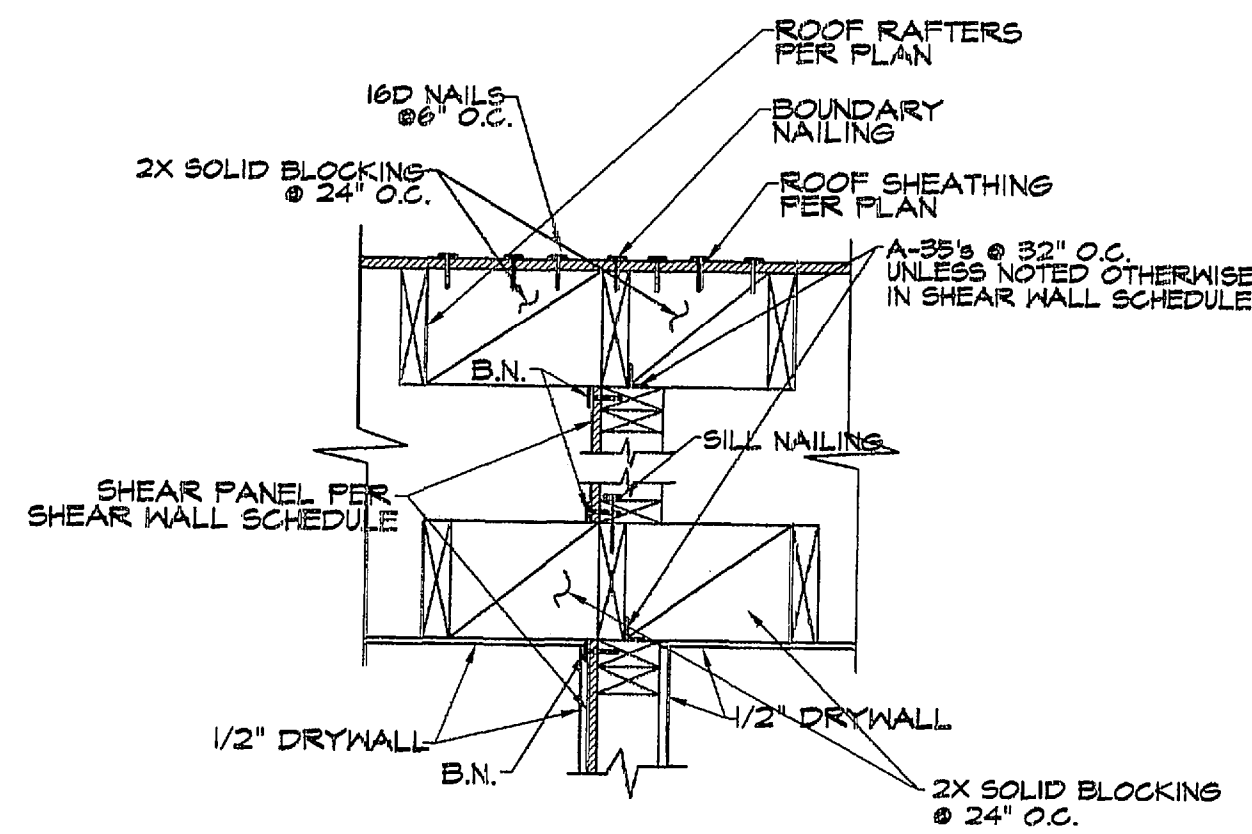


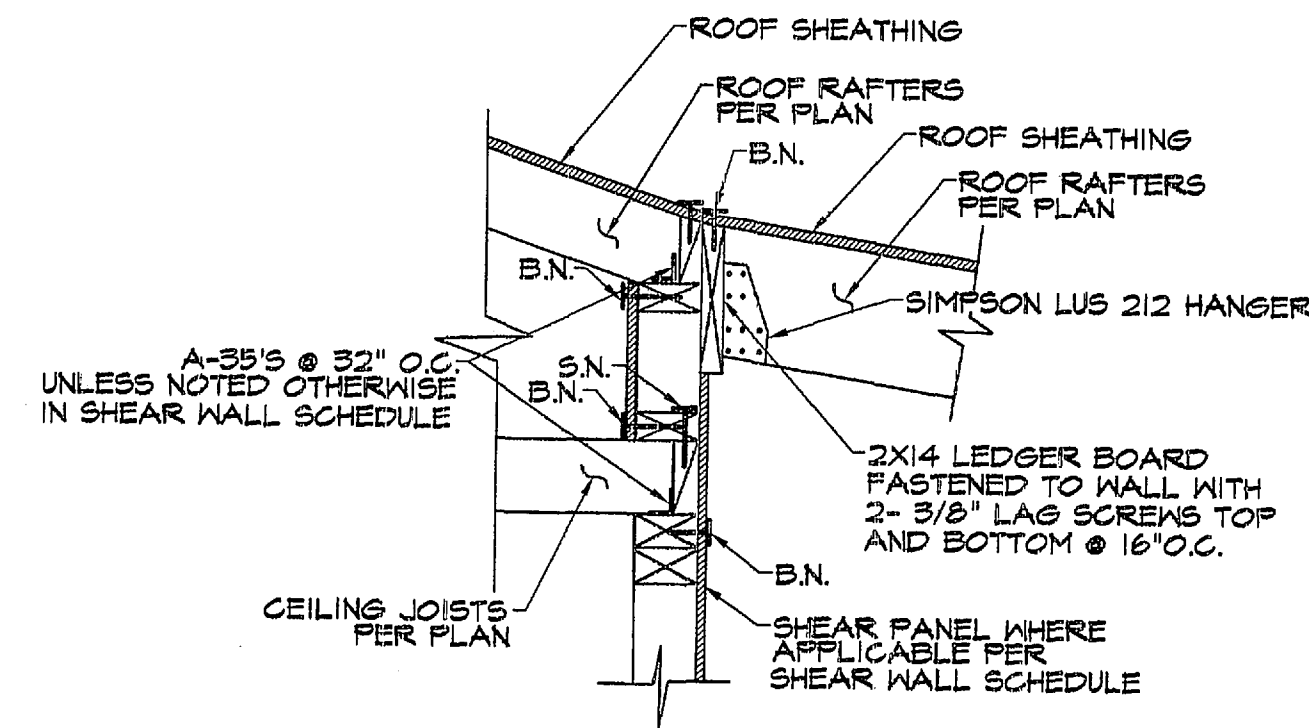
DETAIL 1
NO SCALE



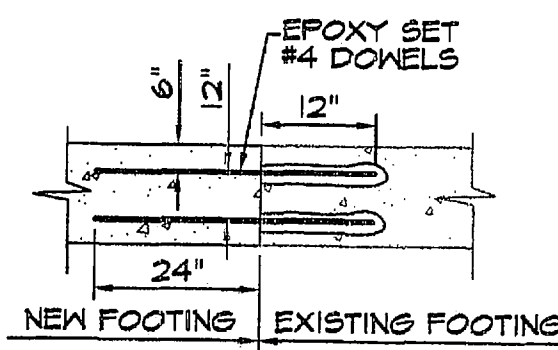
DETAIL 3
NO SCALE



DETAIL 4
NO SCALE

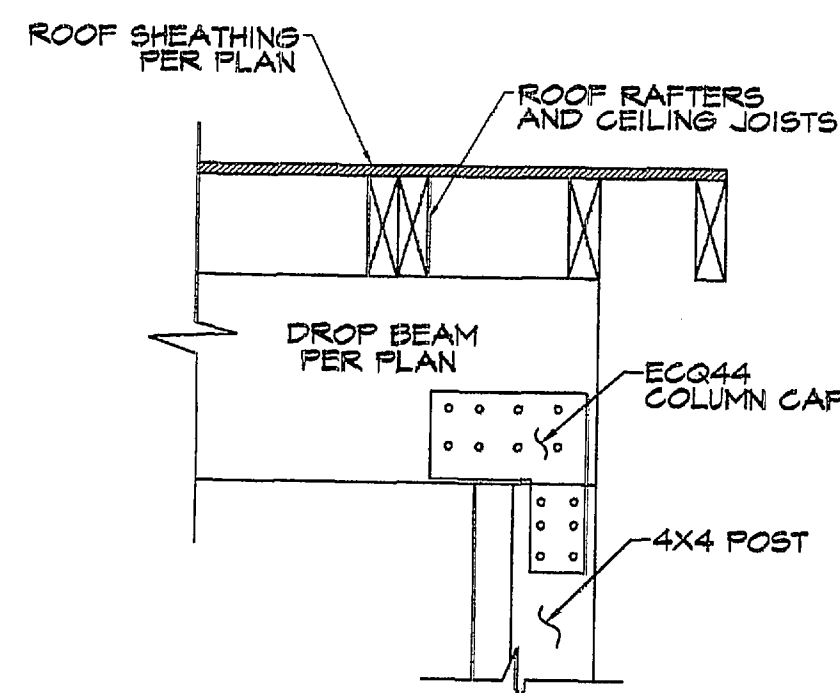


DETAIL 5
NO SCALE

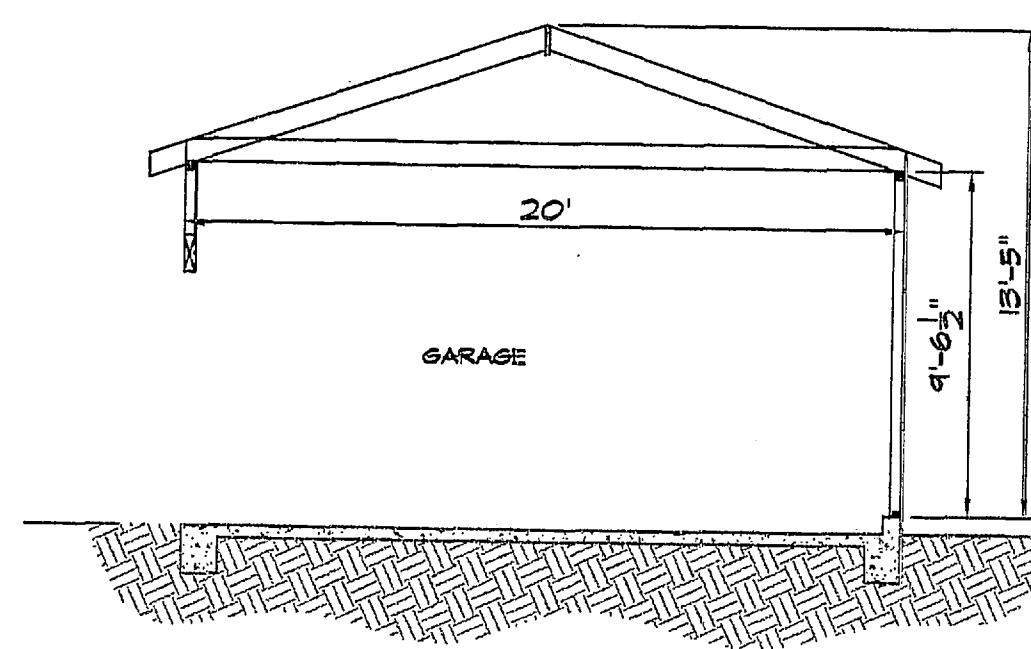


DETAIL 2
NO SCALE

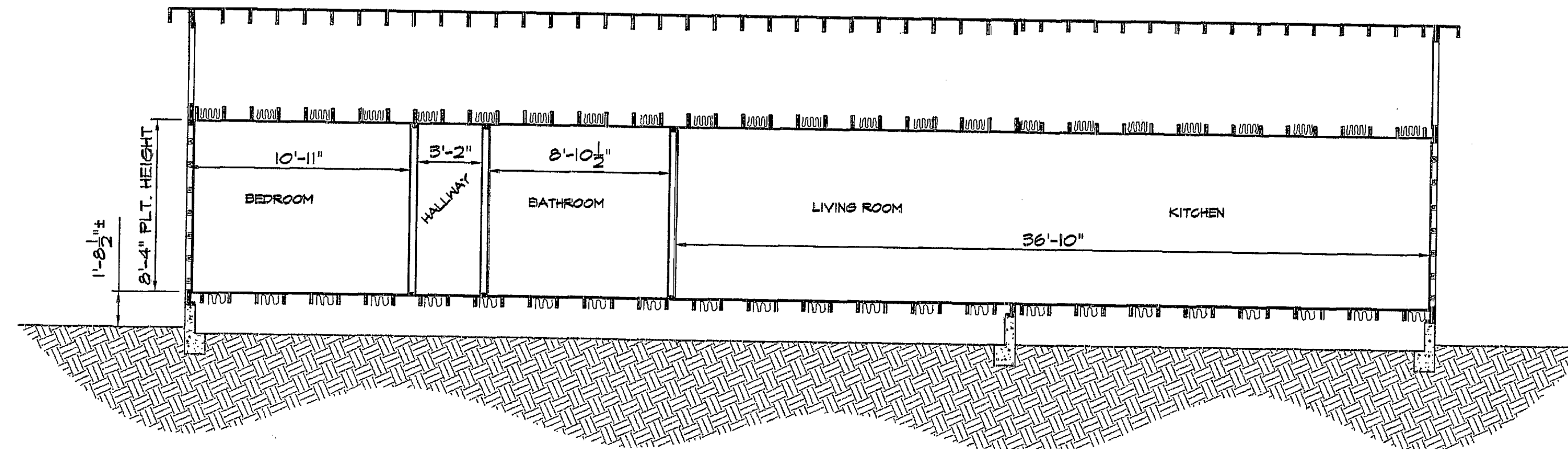
EPOXY USED SHALL BE 'HILTI' RESO 3D 100-ES ESR 2522.



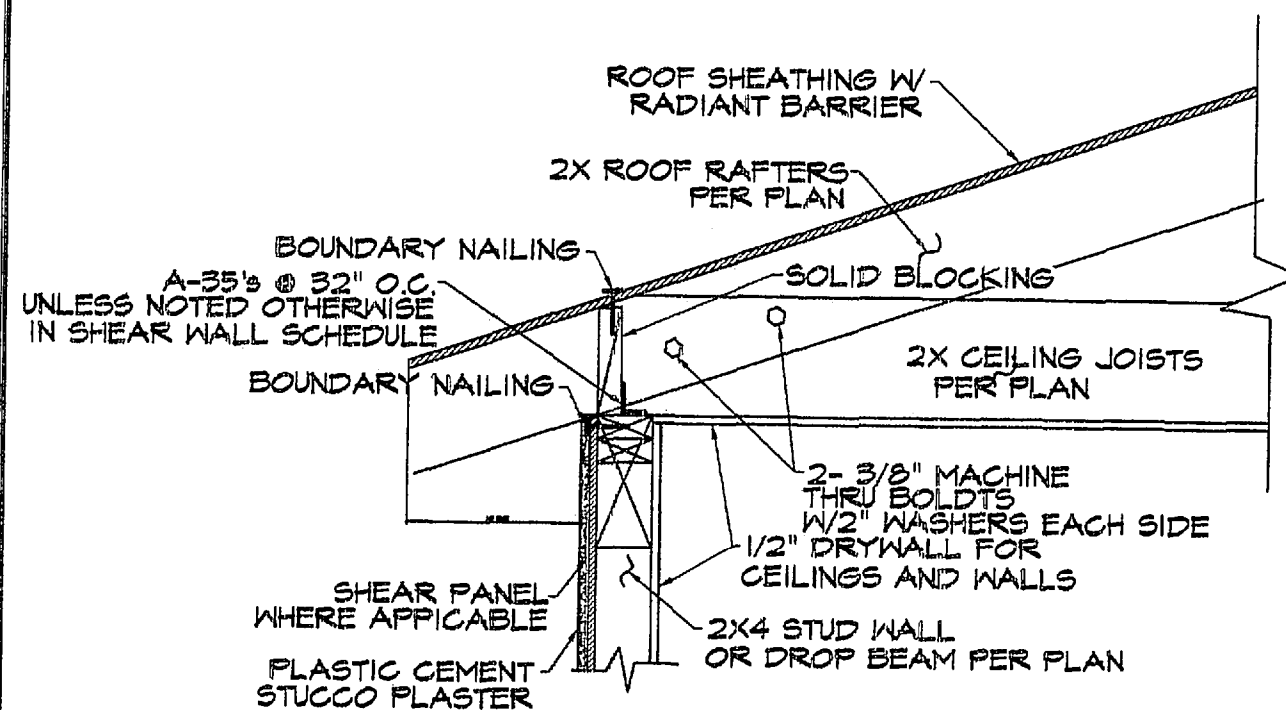
DETAIL 9
NO SCALE



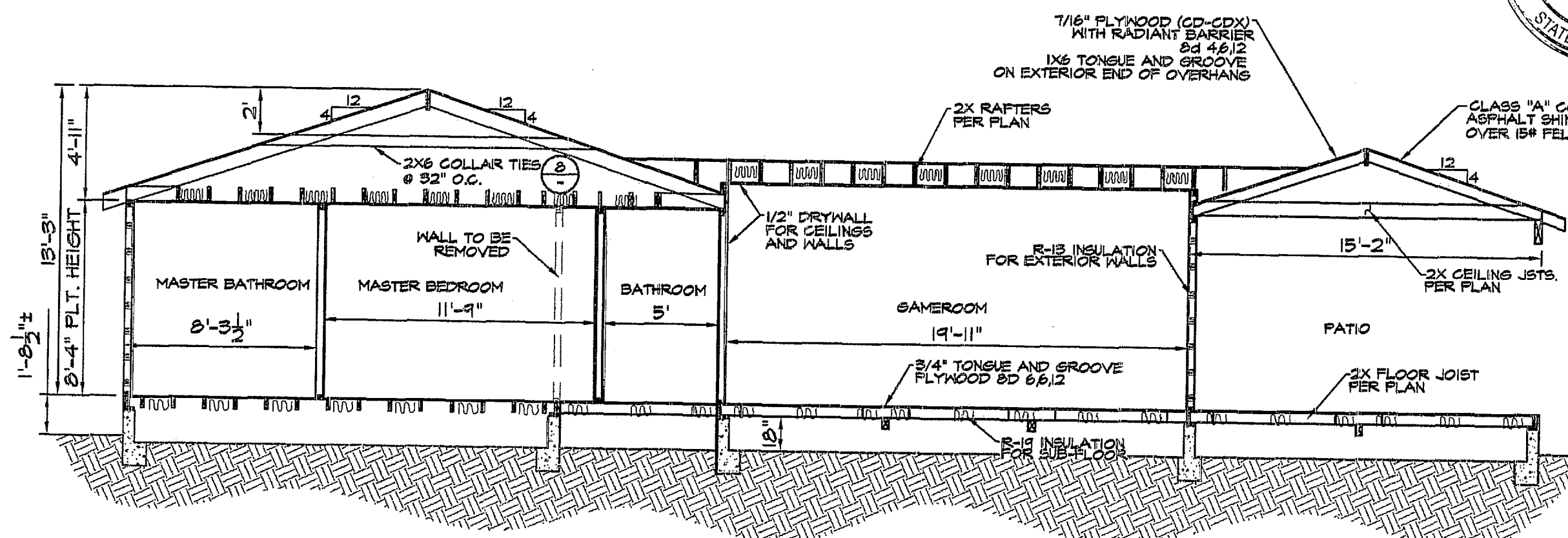
SECTION A-A
SCALE: 3/16"=1'-0"



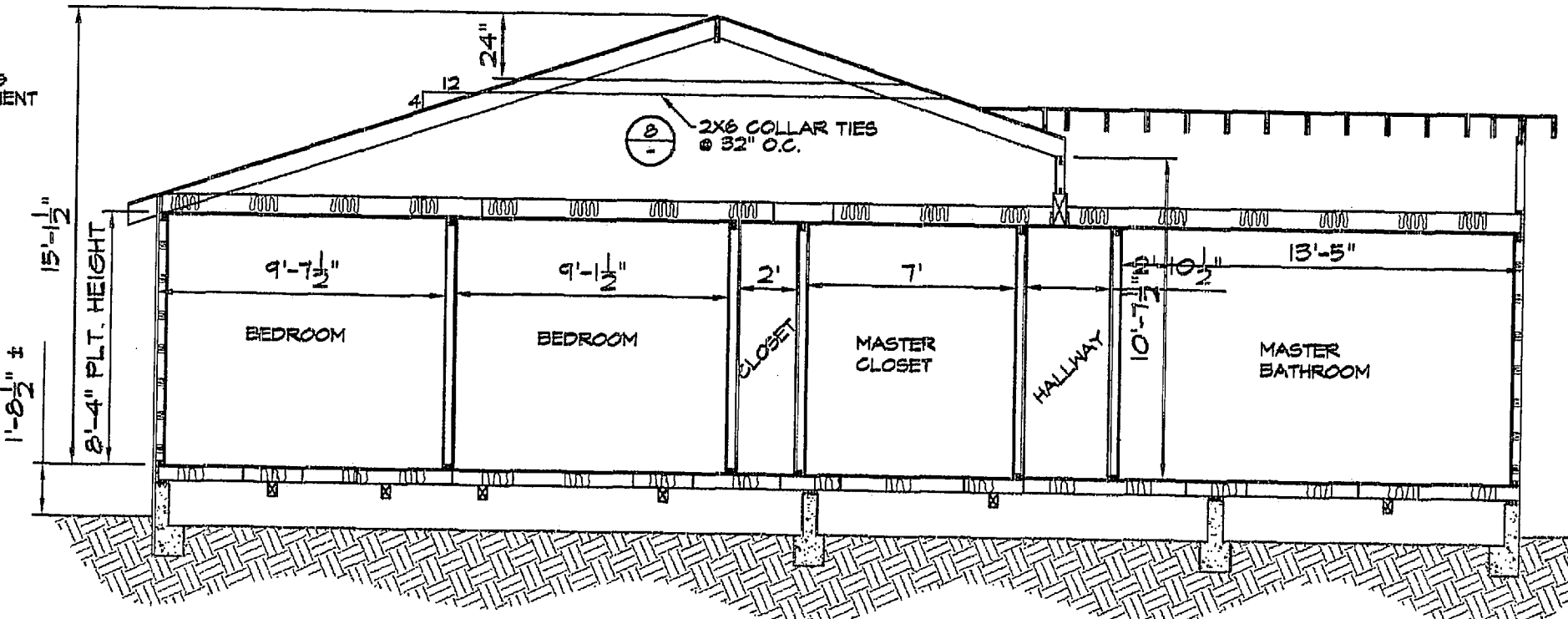
SECTION B-B
SCALE: 3/16"=1'-0"



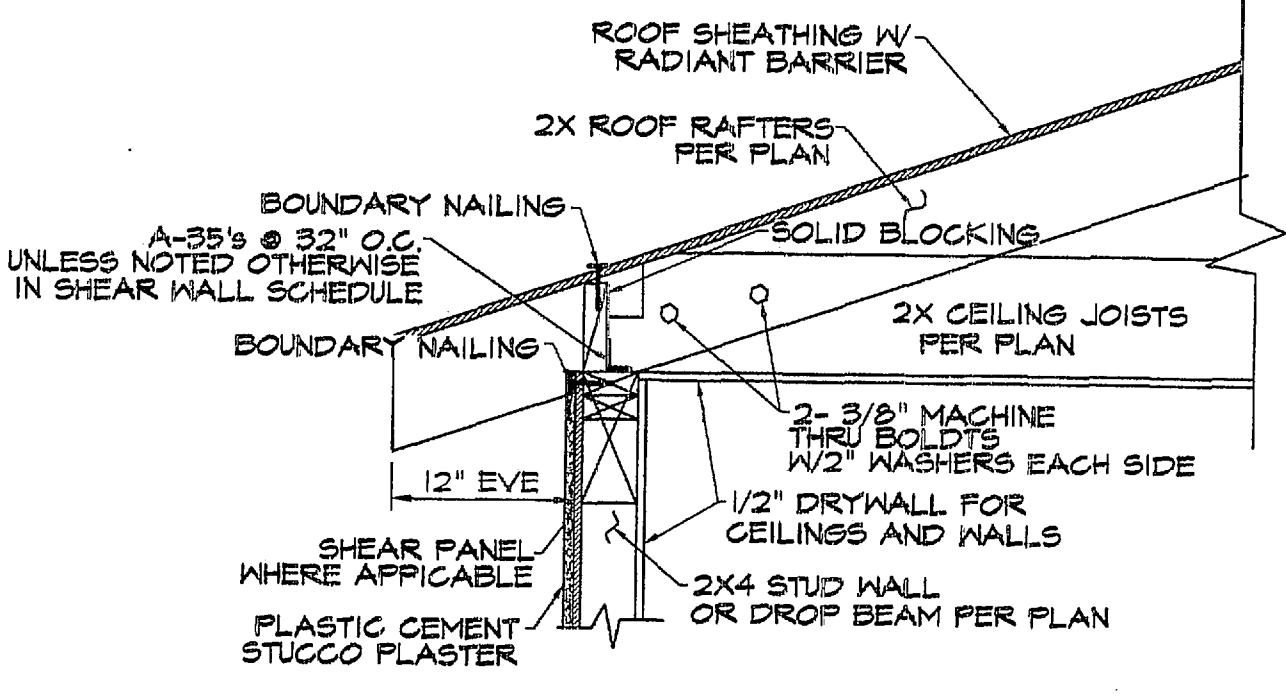
DETAIL 6
NO SCALE



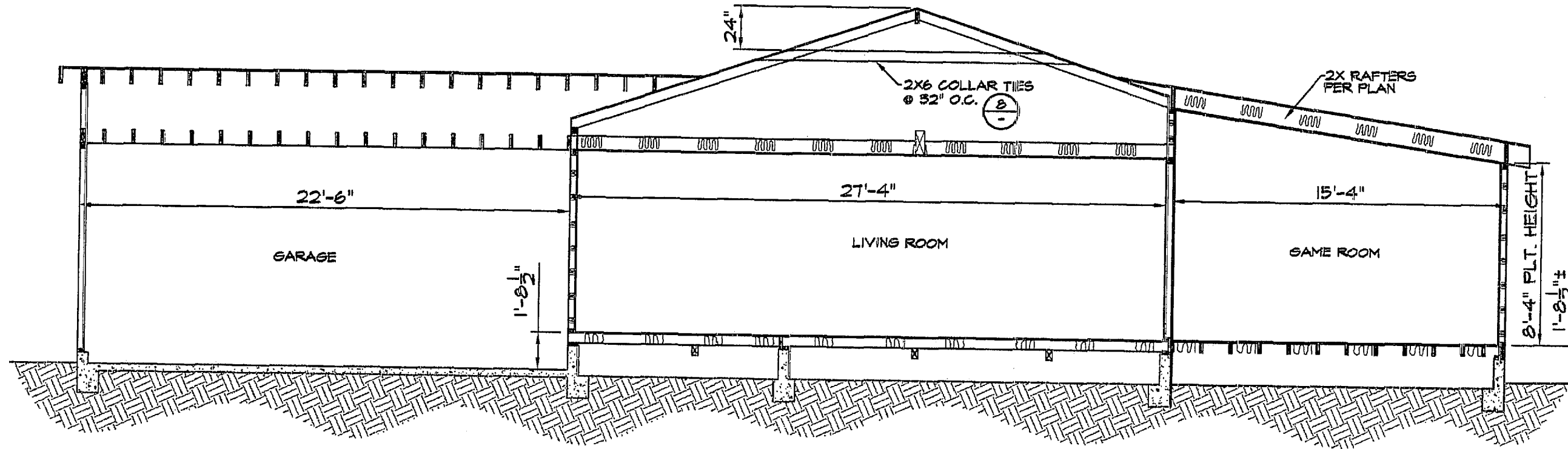
SECTION C-C
SCALE: 3/16"=1'-0"



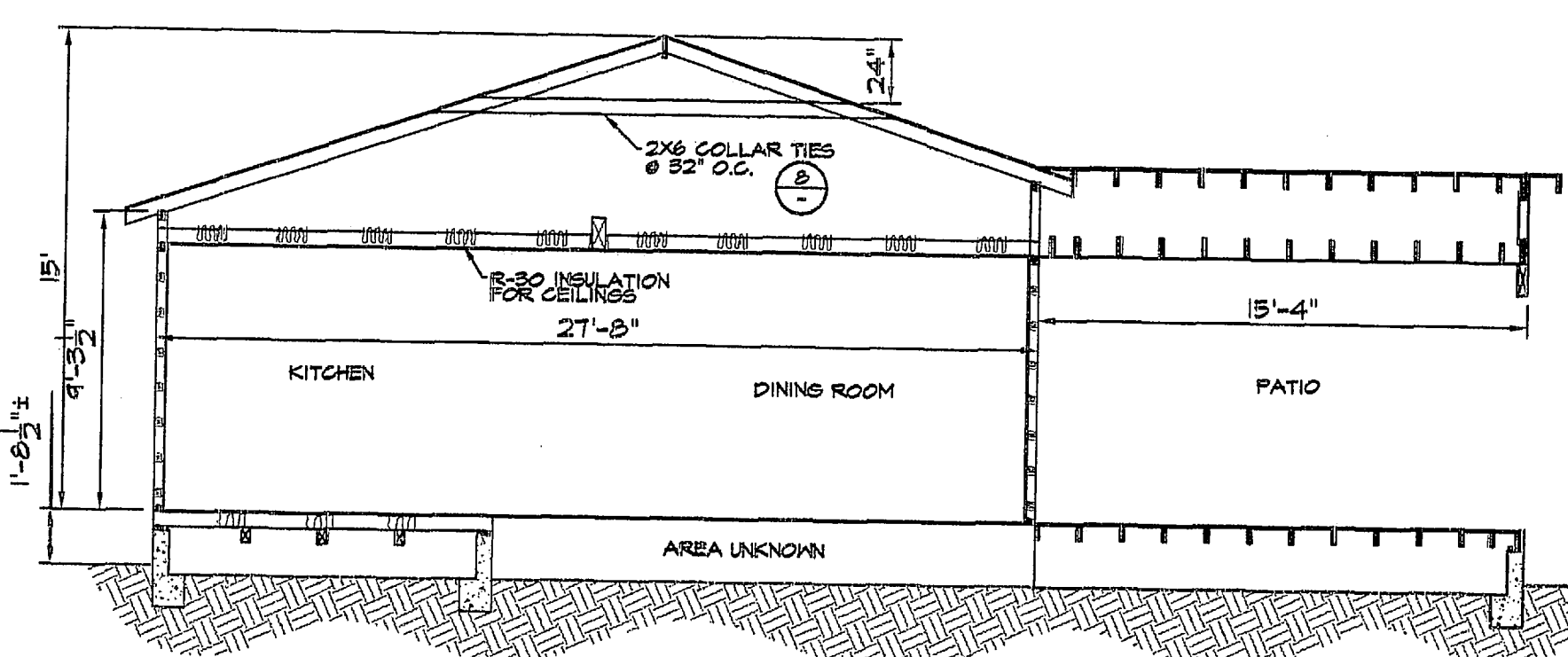
SECTION D-D
SCALE: 3/16"=1'-0"



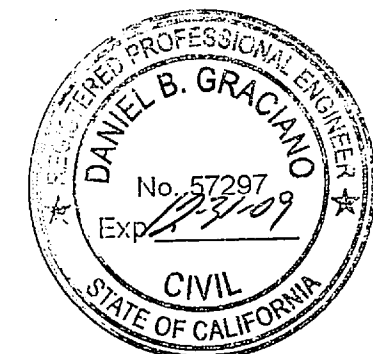
DETAIL 7
NO SCALE



SECTION E-E
SCALE: 3/16"=1'-0"



SECTION F-F
SCALE: 3/16"=1'-0"



REVISIONS	BY

GRIFFIN, WILLIAM & MARLENE
HOME IMPROVEMENTS
1803 PURITAN ST.
DONEY, CA 90242

BUILDING SECTIONS

DATE	01-28-01
SCALE	AS SHOWN
DRAWN	R.G.
JOB	GRIFFIN
SHEET	6
OF 8 SHEETS	